



f m f

ELISHEVA HOUSE CALIFORNIA

ELISHEVA
DIALOGUE BETWEEN
PROJECT AND REALIZATION

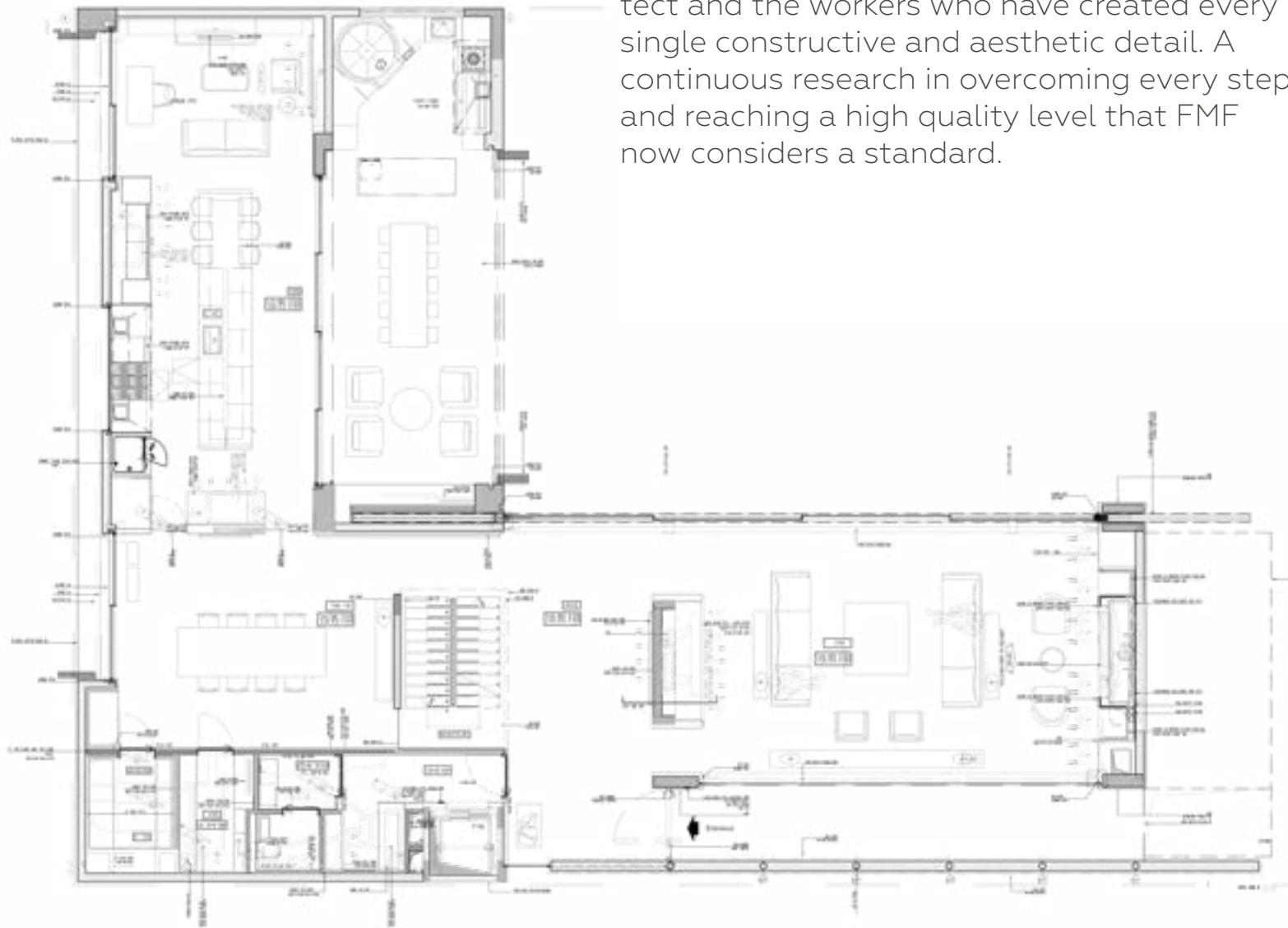


ELISHEVA

A young businessman and his family have chosen the unique setting for their villa and evocative of the Californian landscape. The architectural project develops mainly on the concept of spatial fluidity, materiality and enhancement of light. Different materials such as wood, natural stone and glass find the right interpretation in an extraordinary compositional harmony and fulfilling.

ABSOLUTE QUALITY

From the vision of the project to the virtual visit through the images, you can perceive the continuous dialogue between the architect and the workers who have created every single constructive and aesthetic detail. A continuous research in overcoming every step and reaching a high quality level that FMF now considers a standard.



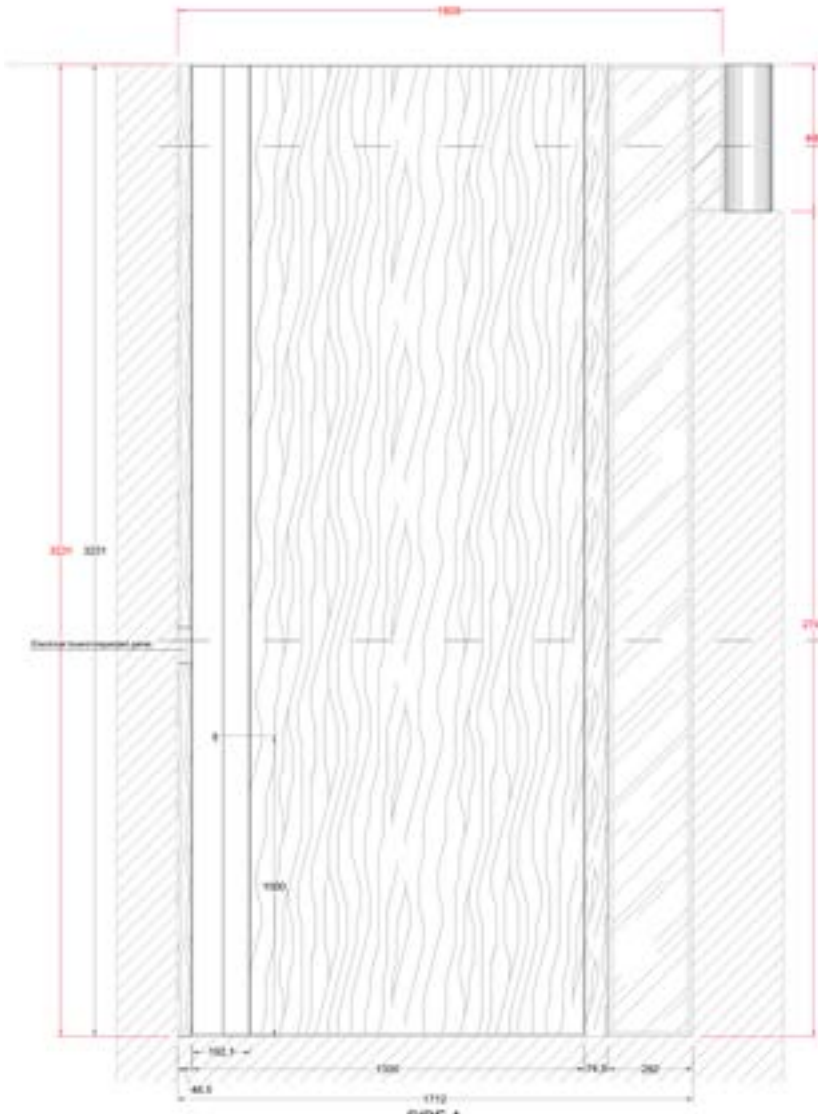
THE MAIN DOOR

At the entrance we are greeted by a main door in American walnut, completely built from scratch to make up for the lack of structures on the market capable of satisfying technical and dimensional requirements.

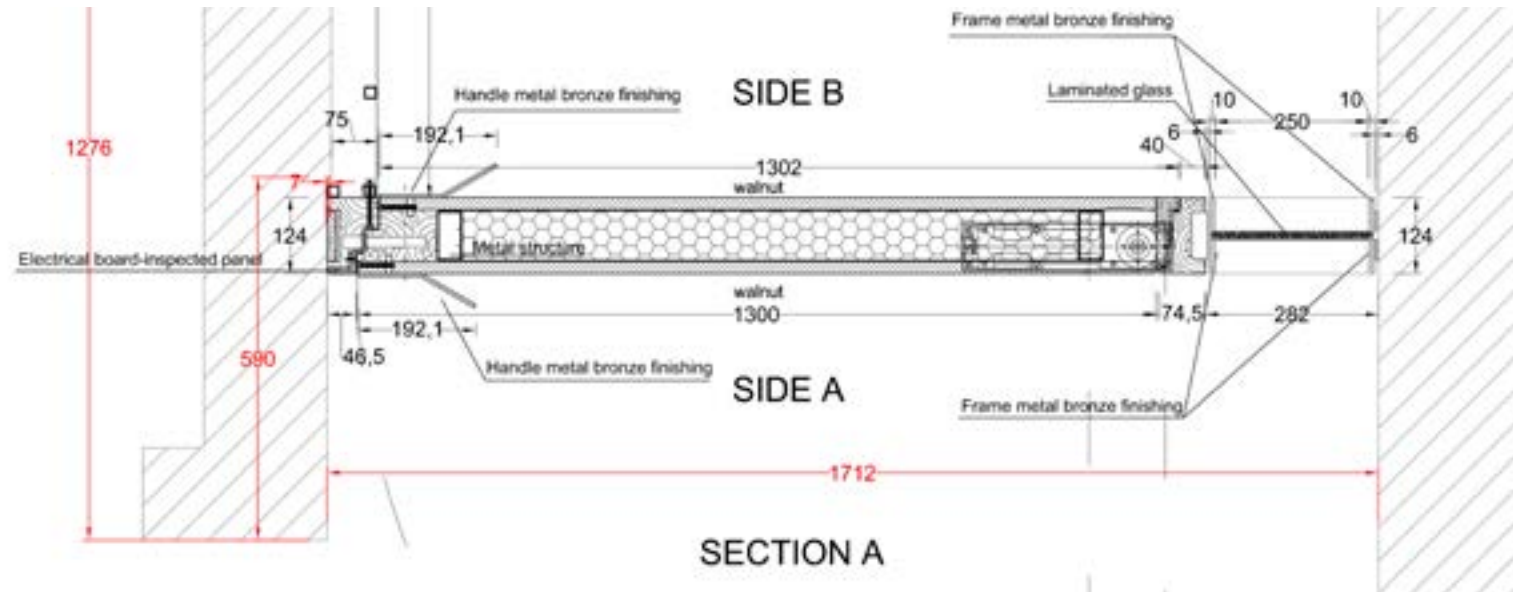
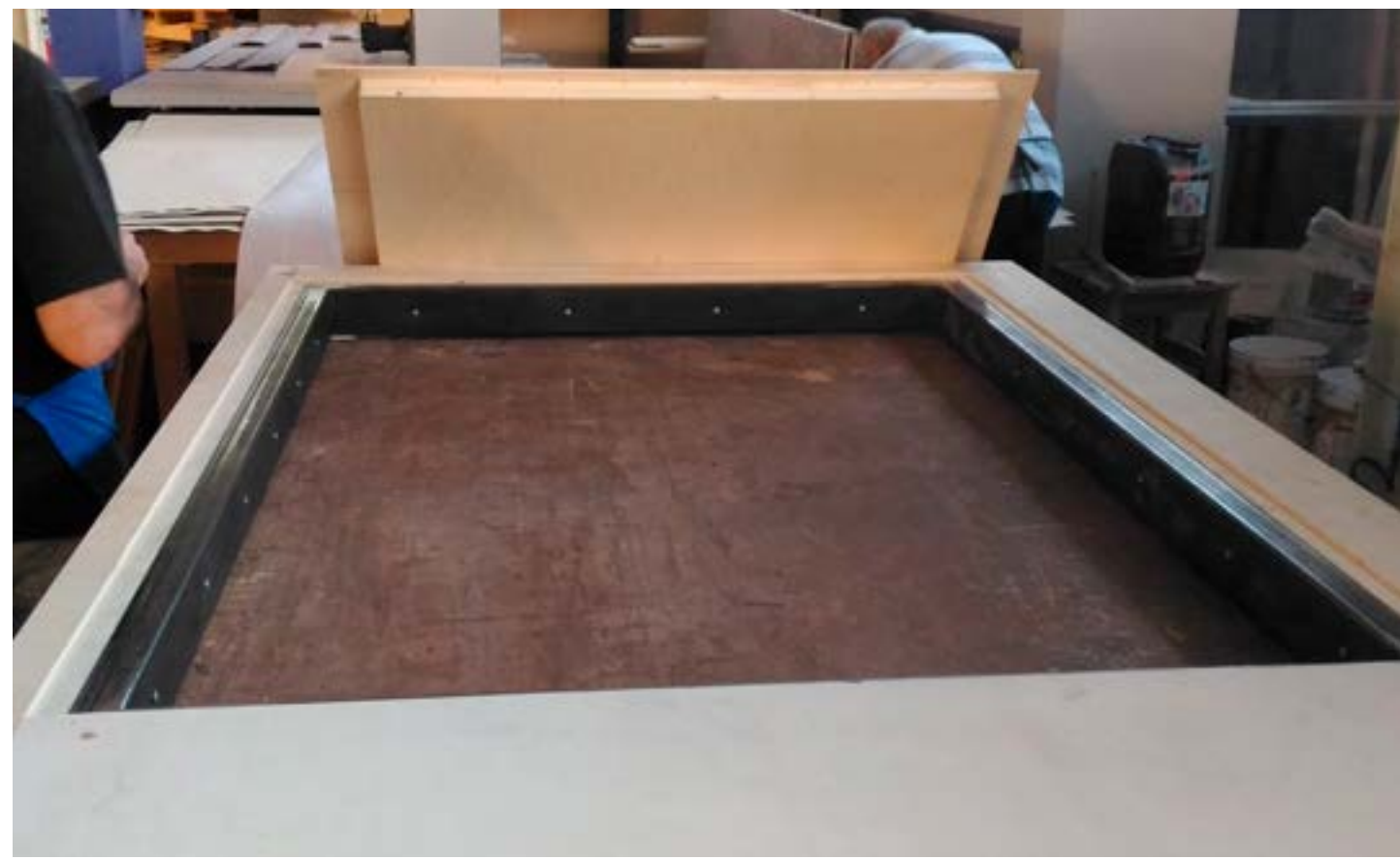
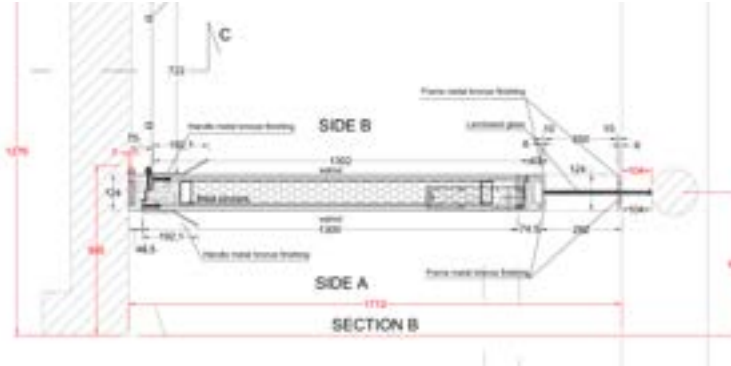




The pivot opening allows a 180-degree rotation of the door and represents one of the most relevant technical details of the construction.



The door the door is 340cm high, 150cm wide and 12cm thick. The internal iron frame and the cladding panels weigh 300 kg and are mounted on a pivot opening mechanism that supports 500 kg; the whole rests on a customized modified ball pivot.

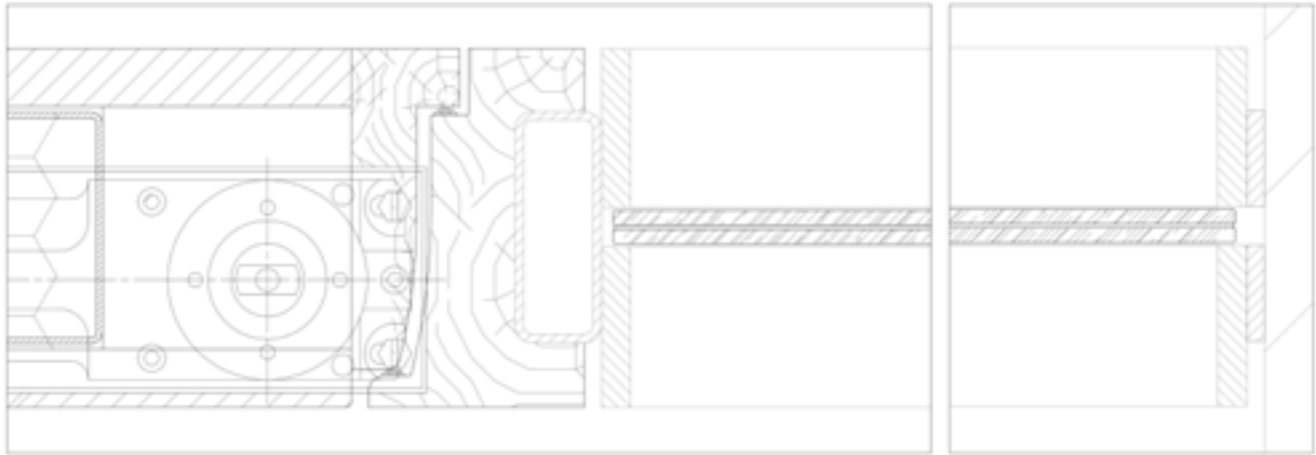
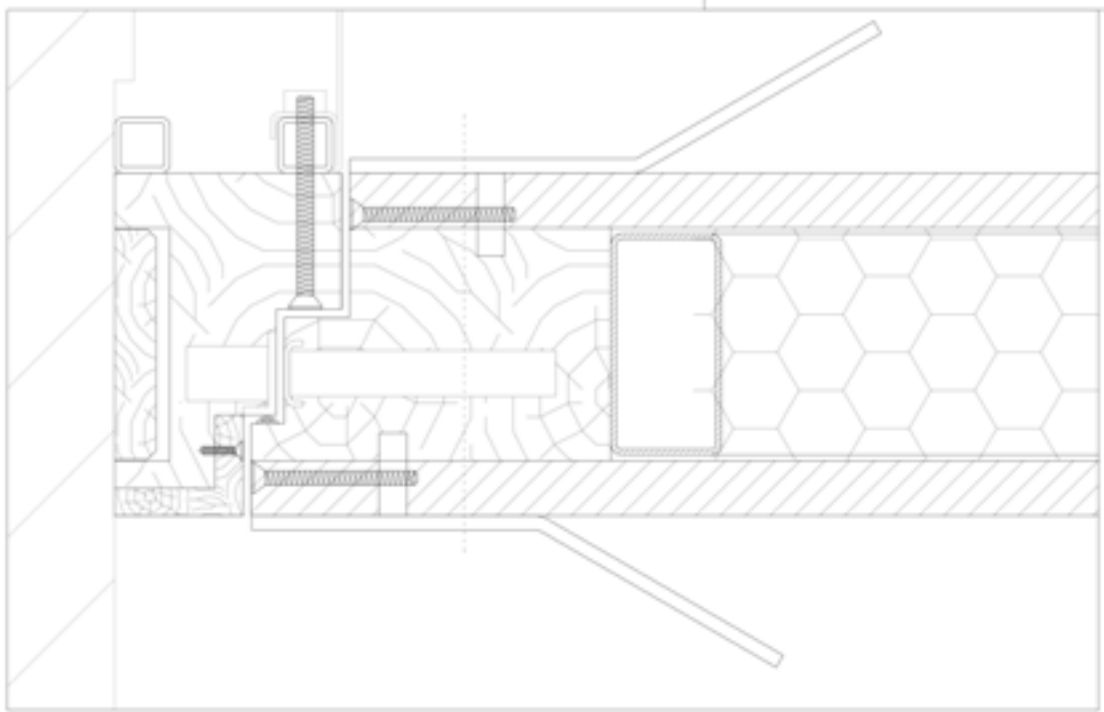


14



Details of the paneled iron structure and shaped profile of the door before painting.

15



16

After the study and realization in the laboratory, the FMF staff proceeds with the final assembly. A phase that enhances the planning of work in all its parts and emphasizes the care dedicated to the solution of every every problem. As evidenced, in this case the modification of an industrial mechanism has satisfied the aesthetic need of not showing any type of interruption between the door. and the floor.



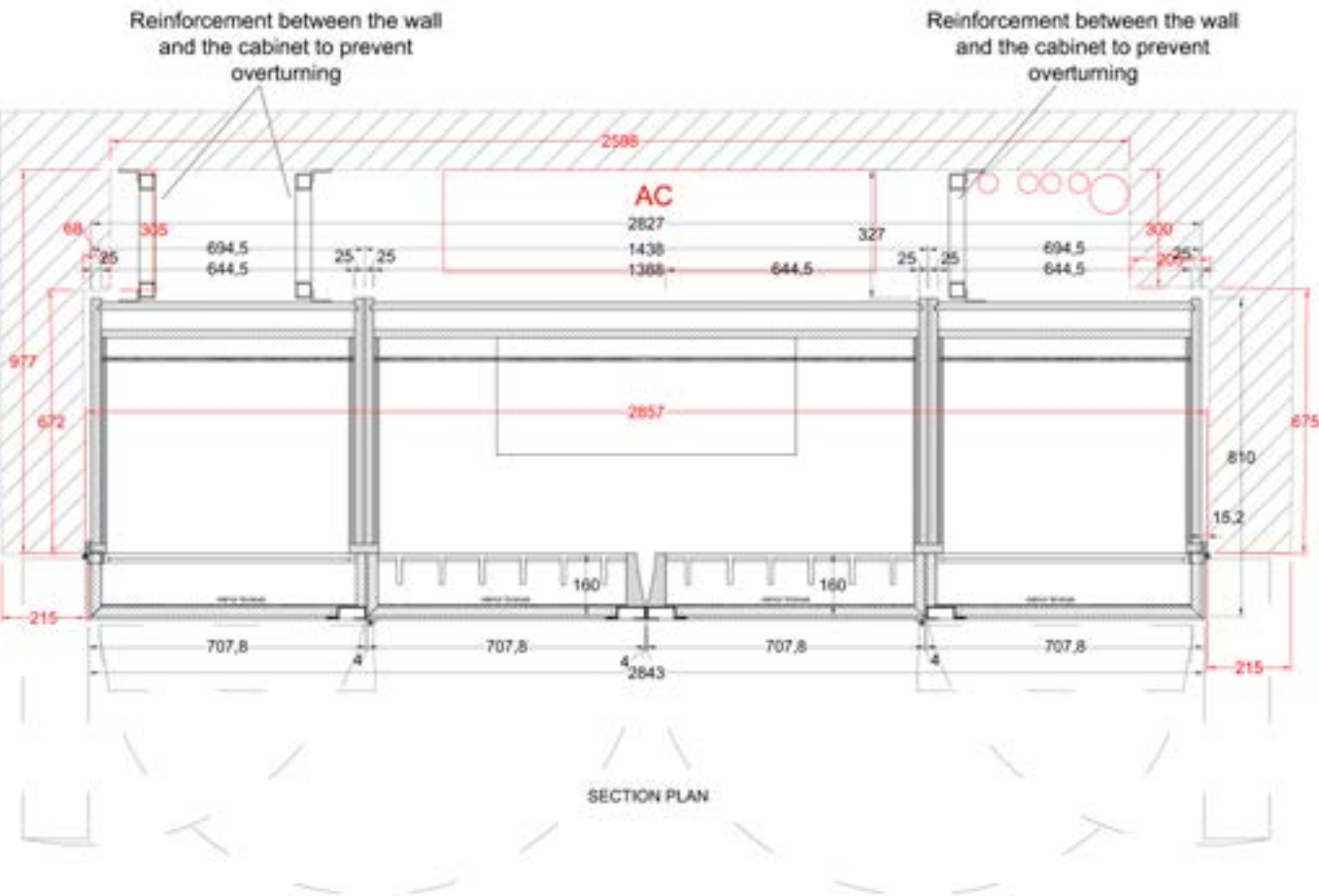
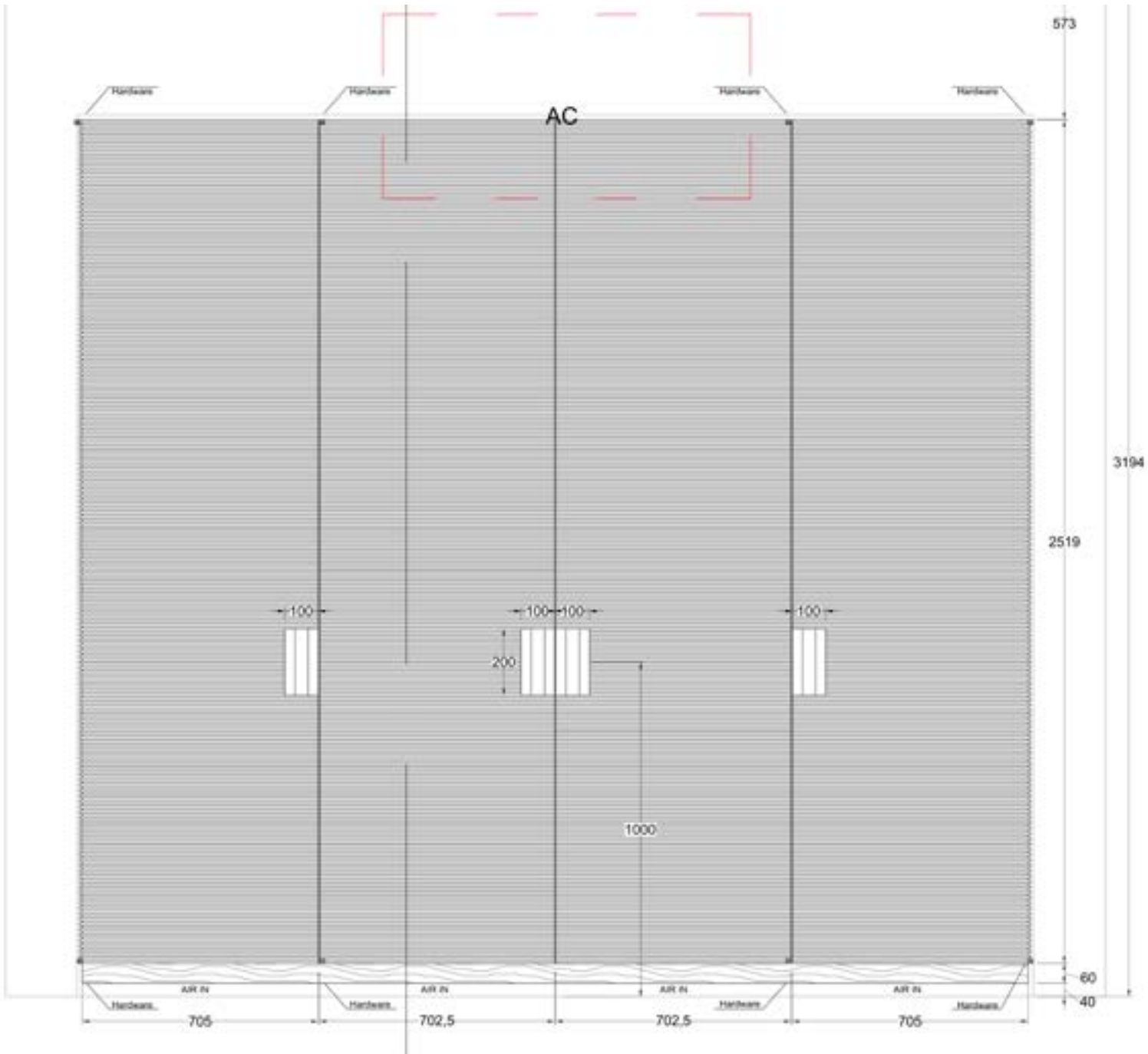
17



CABINET BAR

Bar cabinet designed with 180° opening doors whose main aesthetic feature is represented by the horizontal milling of the American walnut and the details of the polished brass handles.

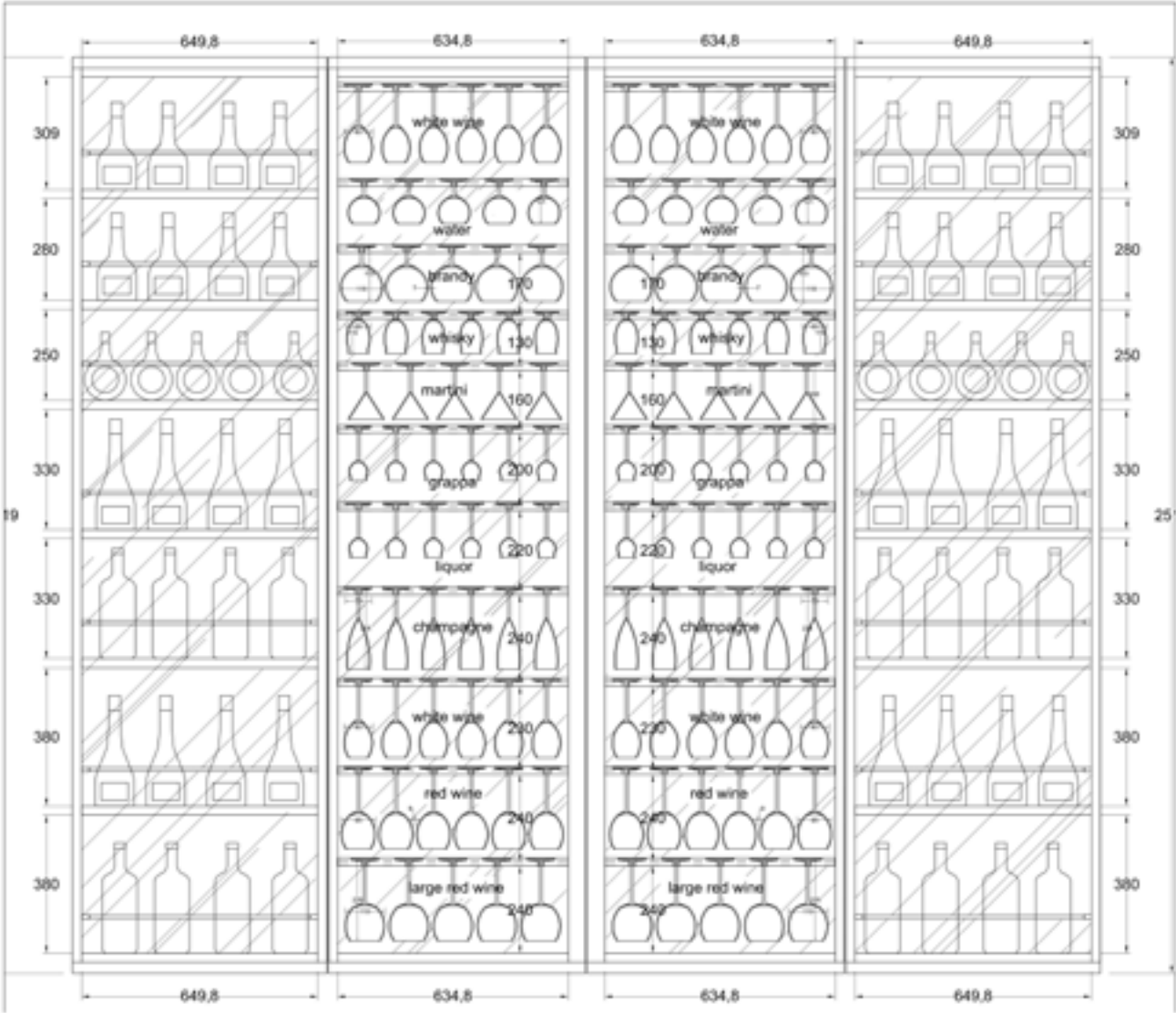




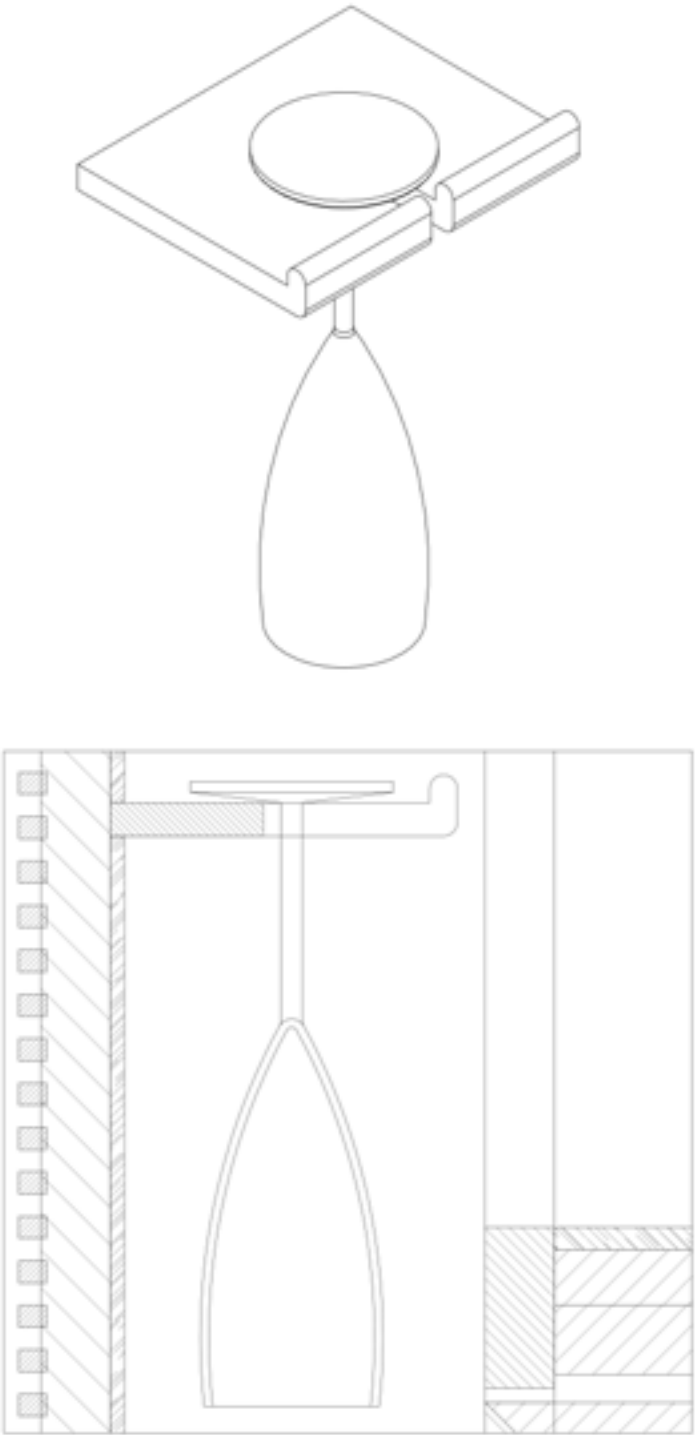
The mobile bar is fixed with steel reinforcements to the 30 cm wall to prevent any movement. The hinges are equipped with bearings in the pins that allow the door to open from 200kg to 180 °
This solution allows to keep the horizontal alignment of the strips intact over time.



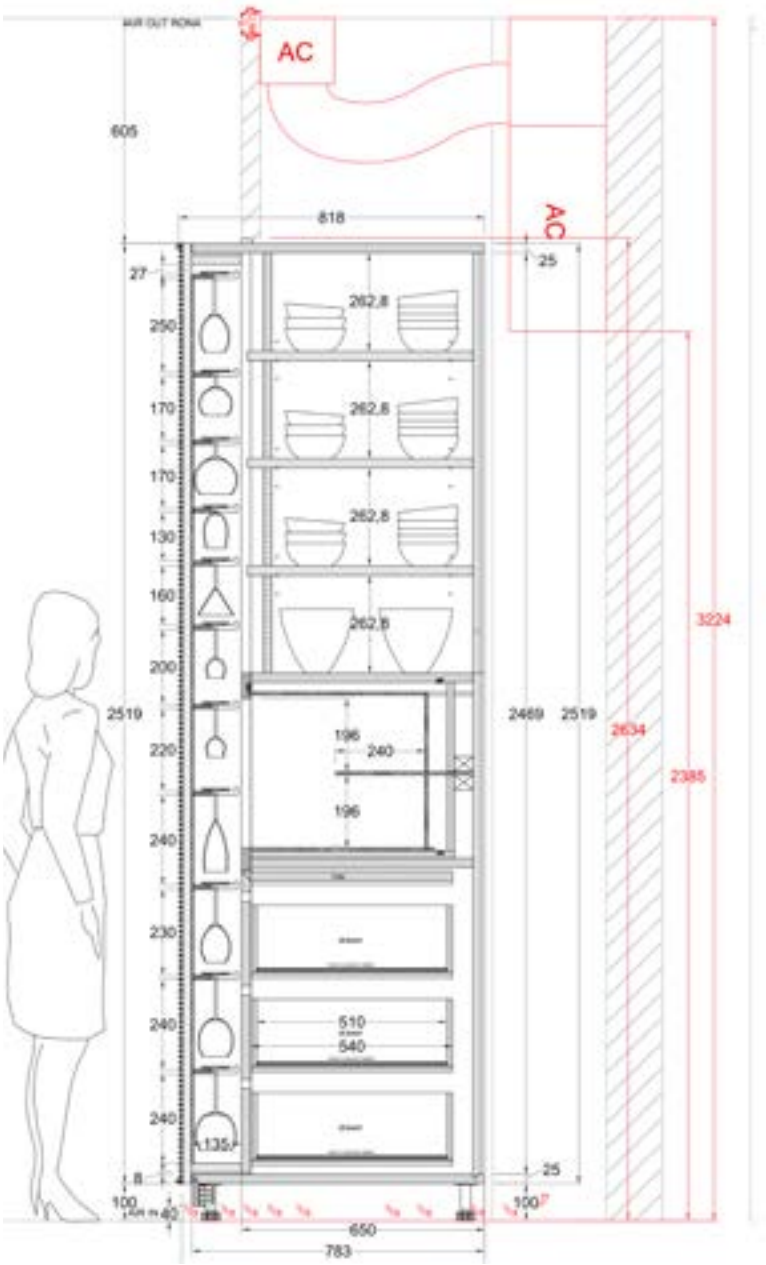
INTERNAL DOOR VIEW



Interior and exterior in natural walnut, all interior mirrors in bronze finish.



DETAILS



The handles and rails for the bottle holders are in polished bronze while the bottom of the drawers is covered in leather.

28

CABINET BAR FULL
VIEW



29





The kitchen respects the customer's need to obtain a single steel top 6 meters long that incorporates the counter and the table. The counter re-proposes the American walnut grain specially chosen for this project.



BOISERIE

The boiserie coverings are the flagship of Villa Elisheva. The careful design, the choice of material and the natural painting have become the common thread for the creation of sophisticated and harmonious environments.



36

1800MQ OF BOISERIE

An accurate selection by FMF of 1800 square meters of American walnut to obtain homogeneous characteristics of the so-called "cardinal" grain.



37



The American walnut has not undergone any coloring but only a 25 gloss varnish that has enhanced the natural color of the wood as an exceptional feature of the selected logs.



CONSTRUCTION DETAILS

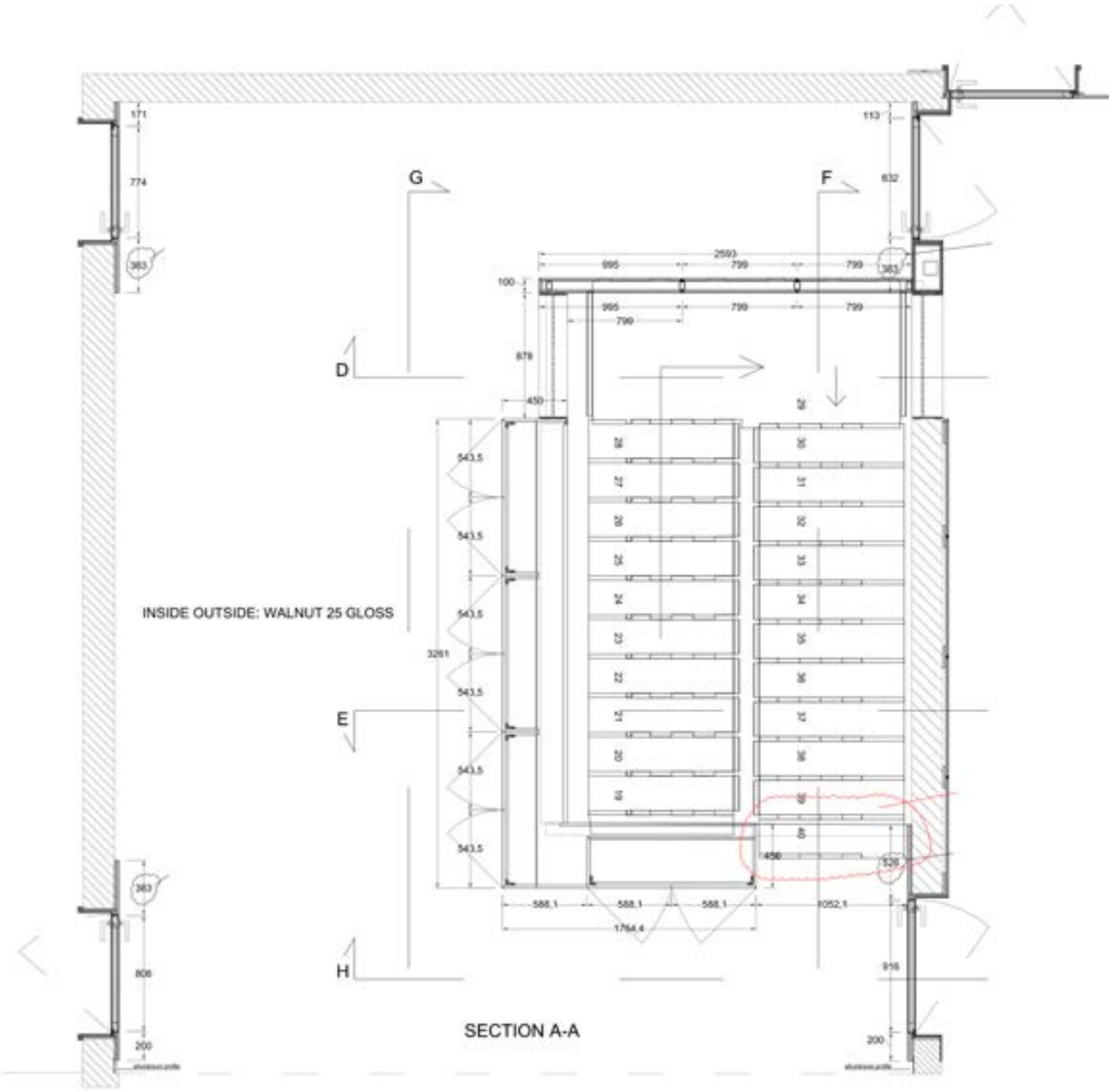
In addition to the selection of veneers with a height of more than 340cm, the most important detail was respecting the 4mm detachment of the boiserie from the floor as required by the project. The walnut panels have been assembled with glue, and not stitched with noyl as normally done.

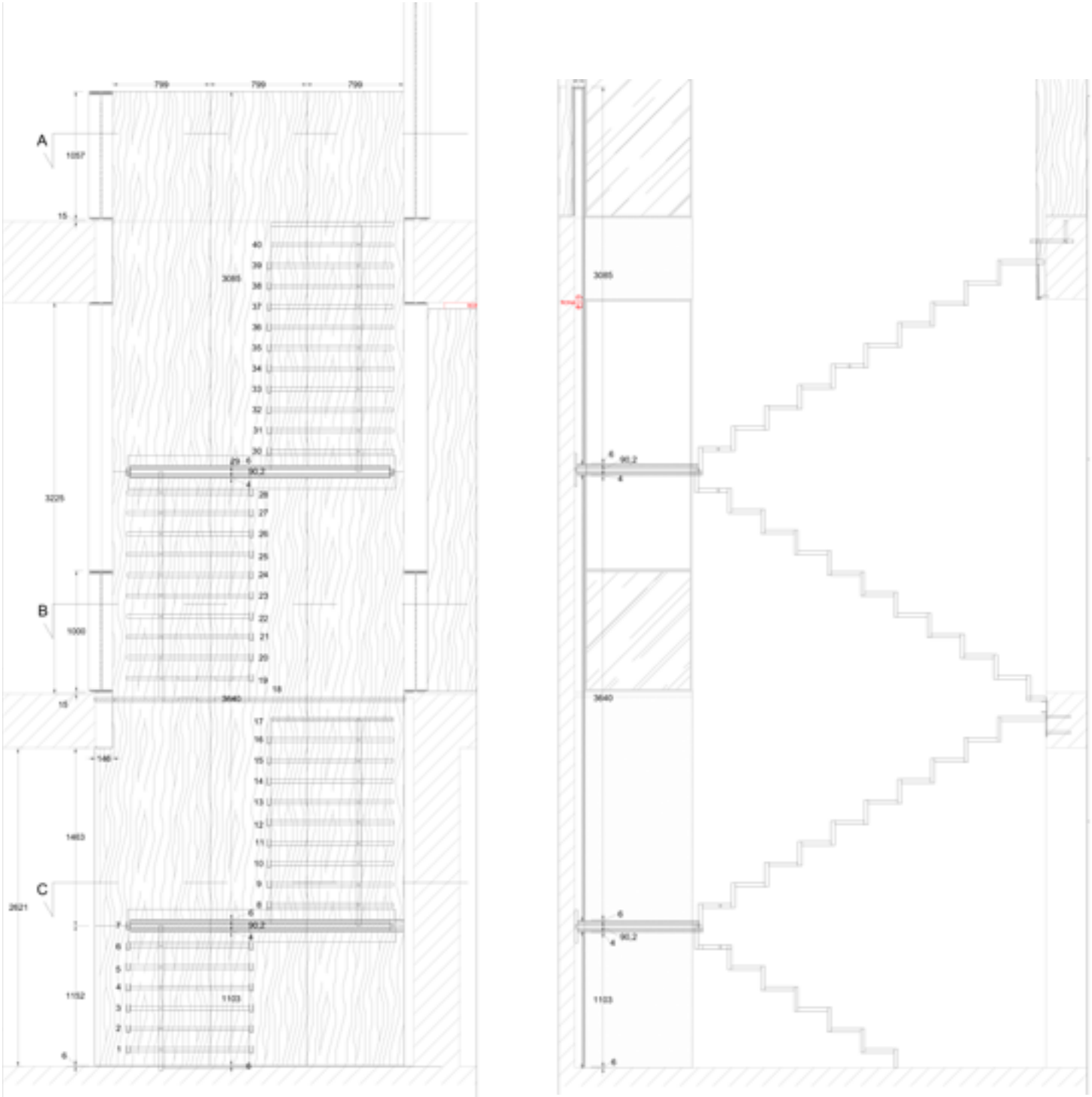


STAIRWAY

The staircase is completely covered in American walnut on a 40 x 2 cm thick steel structure. The essential lines of the architecture are in themselves full of technical and static details resolved with great design mastery and exclusive FMF manufacturing. The structure is cantilevered and rests on three main discharge points which represent the primary feature of the whole project. The architecture of the staircase is emphasized by the wing in finely selected walnut boiserie.







48



DETAILS

The suspended and aerial effect is obtained thanks to the tread for the most part included in the thickness of the covered step, while the LED light cuts emphasize the result. The crystal parapet rests on two points of the staircase and has been drowned in the wooden profile of the tread, obtaining a highly suggestive effect.

49



A door integrated into the design protects the space dedicated to work and reading.

52



Technical and construction details of the bookcase designed for functional use and equipped with specific attention to the comfort of the work studio environment.

53





Entirely in fries maple, the library cabinet of the studio was embellished by creating a graphic pattern with the grain of the wood, while the interiors were studied and designed for the client's needs.

56

Architectural floor plan of a room. The plan shows a rectangular room with a central area labeled "WALL - C" containing an "AC MACHINE". The room is bounded by "WALL - A" (top), "WALL - B" (right), "WALL - D" (bottom), and "WALL - E" (left). The plan includes numerous dimensions in millimeters (mm) and centimeters (cm). Key features include:

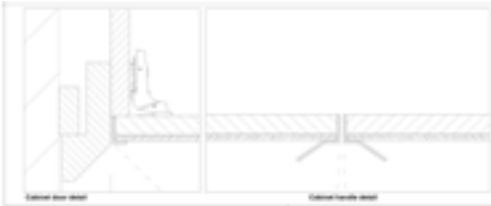
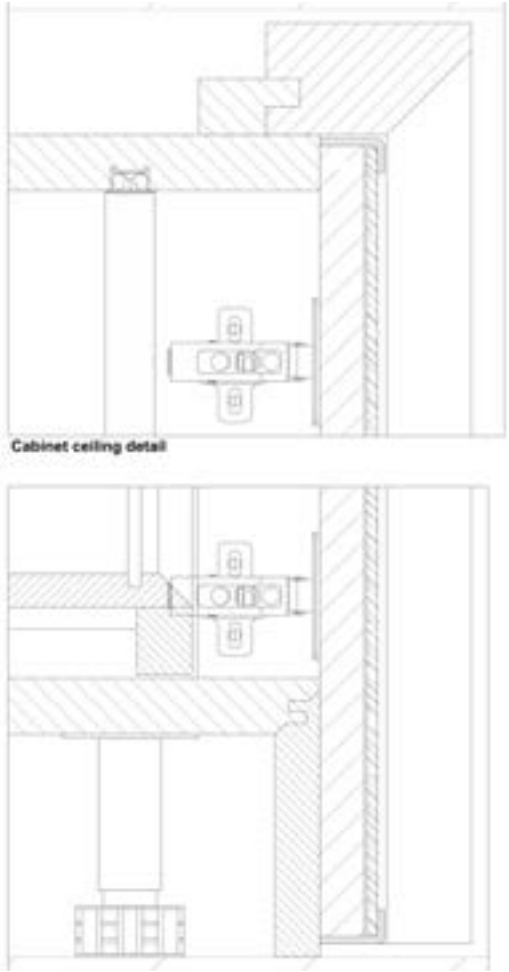
- Top wall: "WALL - A" with a height of 2400 mm.
- Right wall: "WALL - B" with a height of 2400 mm.
- Bottom wall: "WALL - D" with a height of 2400 mm.
- Left wall: "WALL - E" with a height of 2400 mm.
- Central area: "WALL - C" containing an "AC MACHINE".
- Doors: "D-31" (top right), "D-32" (bottom right), and "D-33" (bottom left).
- Dimensions: Various dimensions are provided for walls, doors, and the central area.



62



Construction details and technical details discussed with the architect for the realization of the steel handle and prototype of the door with glass coating.



63

64



The secondary part of the cabin is dedicated for shoes and has been entirely designed for this purpose with pullers, inclined shelves and lighting LEDs.



65





The bathroom has been designed with the same materials and color choices as the walk-in closet to which it is directly connected.

BATHROOM

FMF created the steel doors to separate the sanitary showers, the shaping and precision were supported by the excellent team of builders and the mastery of the work of the craftsmanship.





WINE CELLAR

A small space dedicated to the wine cellar has become, despite the minimum dedicated space, a treasure chest full of details and aesthetic ideas. The sliding ladder and the decorated ventilation grids have created a "Caveau" effect capable of holding an enormous number of bottles.

72



Construction details of the bottle holders, with high-capacity Blum hinges and details of the laser-perforated brass grid during assembly at the customer's villa.

73





FMF SRL

Via Don MARIO Cancian , 79
31020 San Zenone degli Ezzelini (TV) ITALY
Tel +39 0423 968130
info@fm-f.it

www.fmfatelier.com

fmf

www.fmfatelier.com