



FME

LIVING BEYOND THE SKY



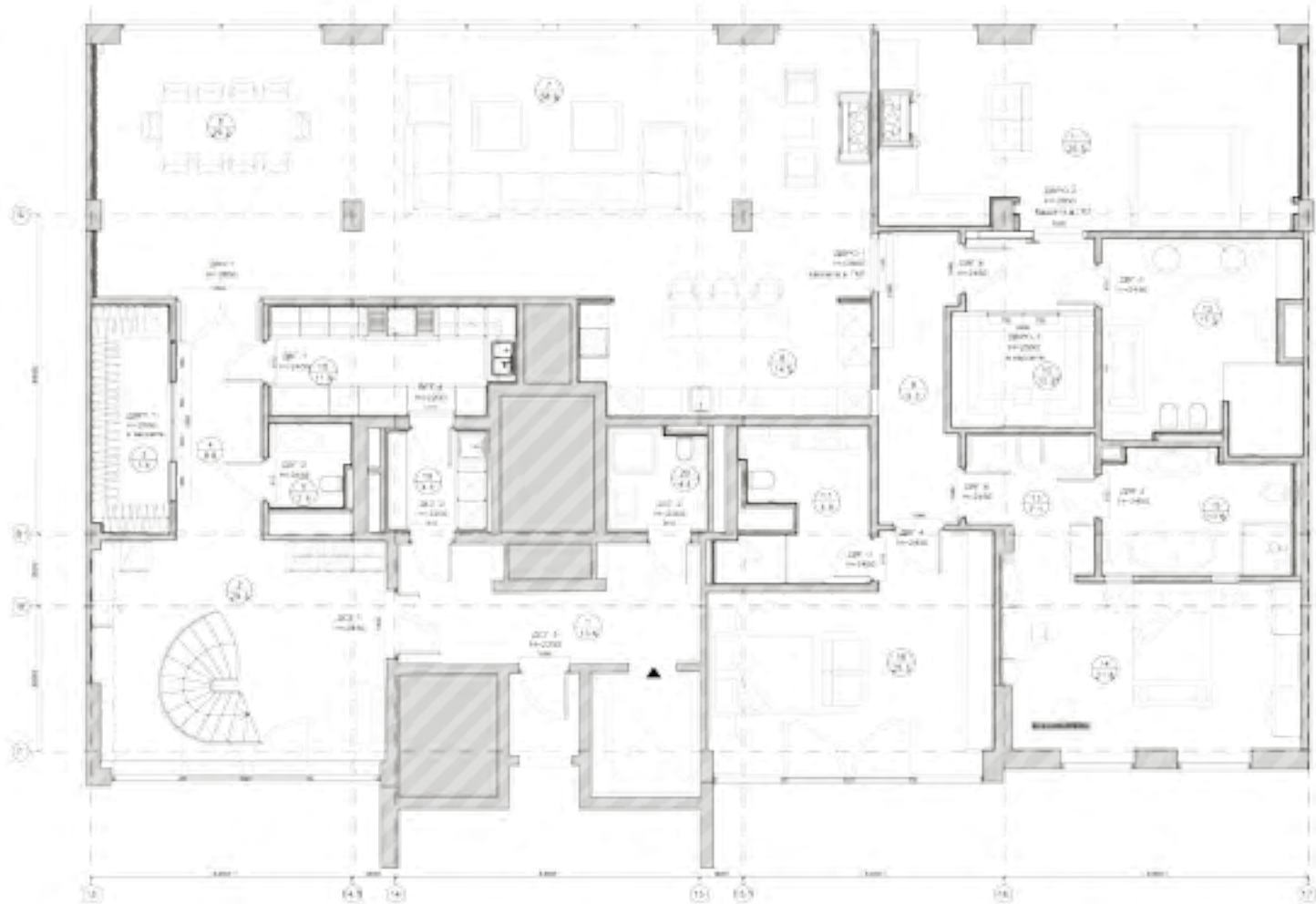
MOSCOW
PENTHOUSE
LIVING BEYOND THE SKY



MOSCOW PENTHOUSE

A daring and refined architectural project, followed in every detail, for a Russian entrepreneur who wanted her home on the line of the skyline of the capital Moscow. The exclusive penthouse is divided into two levels by a staircase as the central spine of the project. The suggestive spiral develops along the two floors with a constant view of the city skyline. Every single detail has been treated in a careful and sublime way by the staff of designers and by the workers who took care of a project that lasted two years, full of challenges and satisfactions.

6



A SPIRAL TOWARDS THE SKY



7

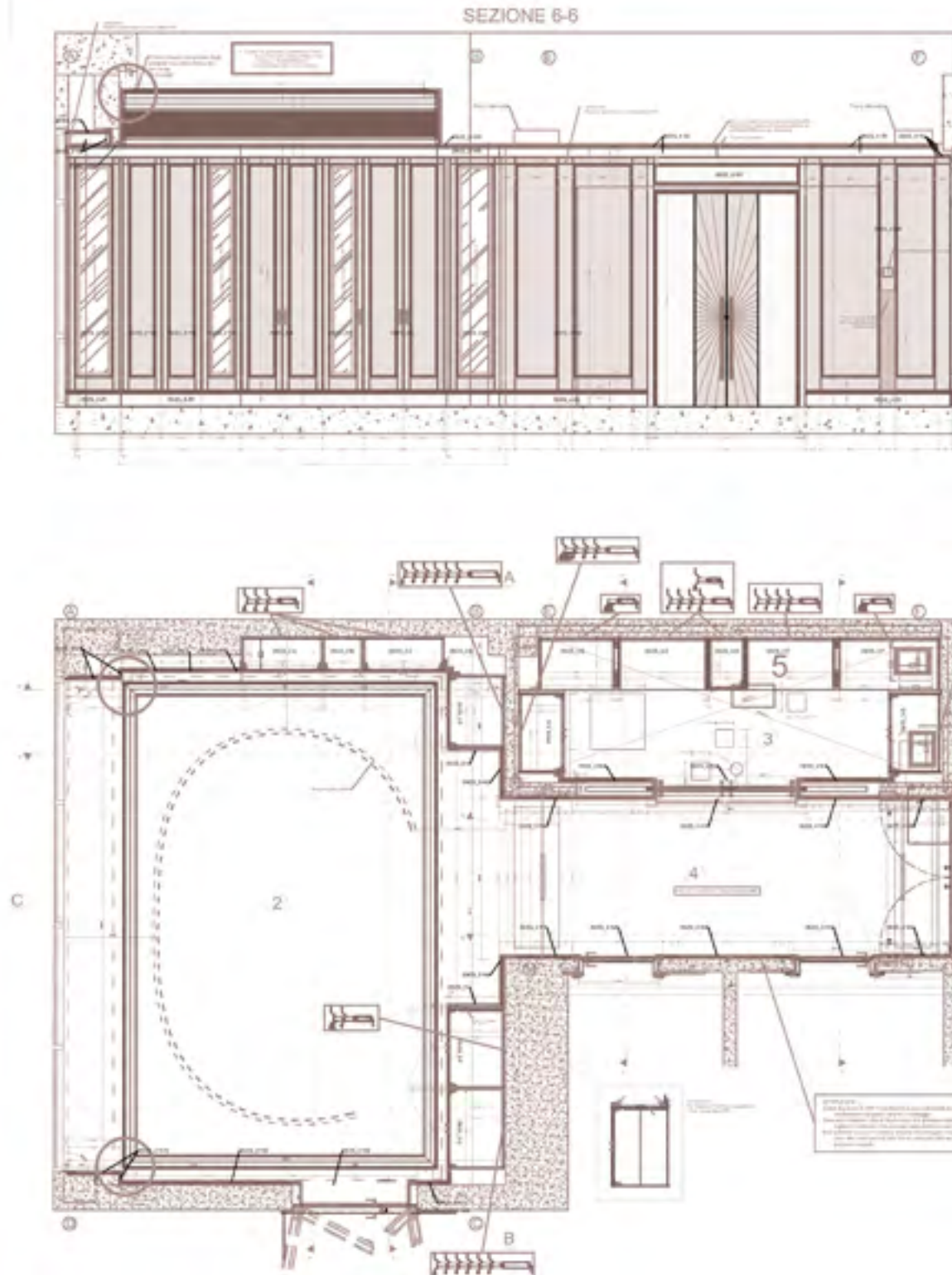
MAIN ENTRANCE

8 The entrance is characterized by the spiral staircase as the central thorn of the project. The crystal and metal details are reflected on the cleverly designed chandelier, which envelops itself inside the compartment almost like a dance, reflecting all the details. The Arctic plane wood paneling becomes the perfect frame and stage for this architectural detail that stands out, integrates, merges and exalts itself on the skyline of the city of Moscow.



BOISERIE

The boiserie and the entrance wardrobes were made with a wise use of materials; the lacquering and the metals have been interspersed with each other and frame the texture of the Arctic Platano worked in a radial pattern.



The furnishing project involves every surface of the attic both for the boiserie walls and for the ceilings. Each room contains functional and containing spaces in perfect harmony with aesthetic needs.

PROJECT

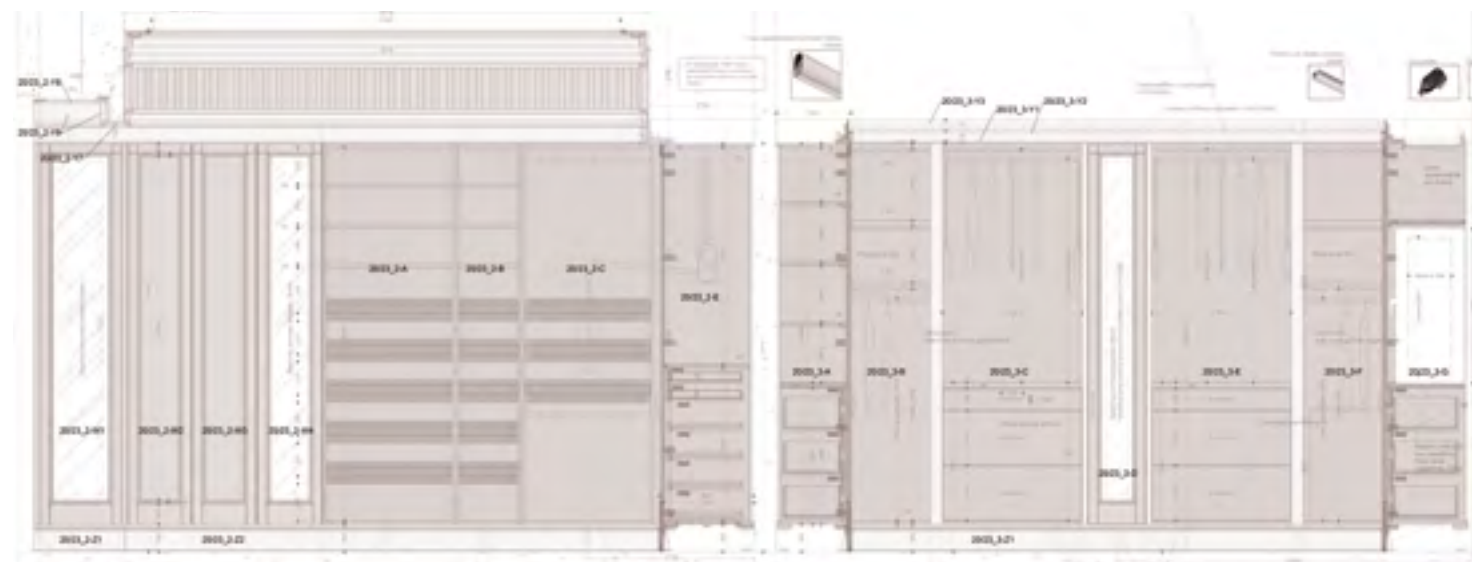


Assembly and verification of the booth during the production phase before painting in which the interiors in Arctic plane tree essence are highlighted.

ENTRANCE CLOSET

Elegance and sobriety envelop walls and ceilings from the entrance to the main hall of the attic. The precious woods, metals and precious crystals are enhanced by the contrast with the Nero Portoro marble of the floor.





PROJECT



Details in the production phase of the continuous veneer of the plane tree in all the internal elements of the cabin.



DETAILS

Each stage of production and pre-assembly was desired and supervised by the team of designers and carried out by FMF following a precise protocol of constant verification of both the quality and the progress of the work.



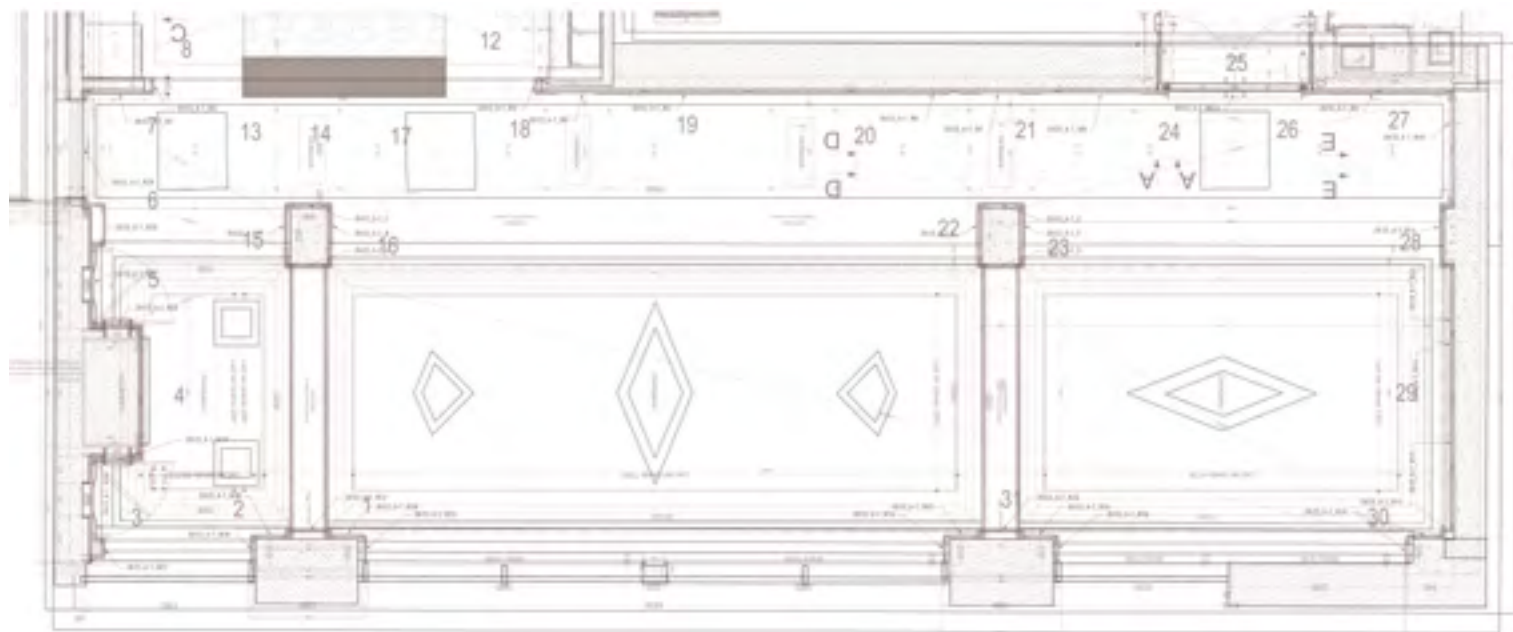
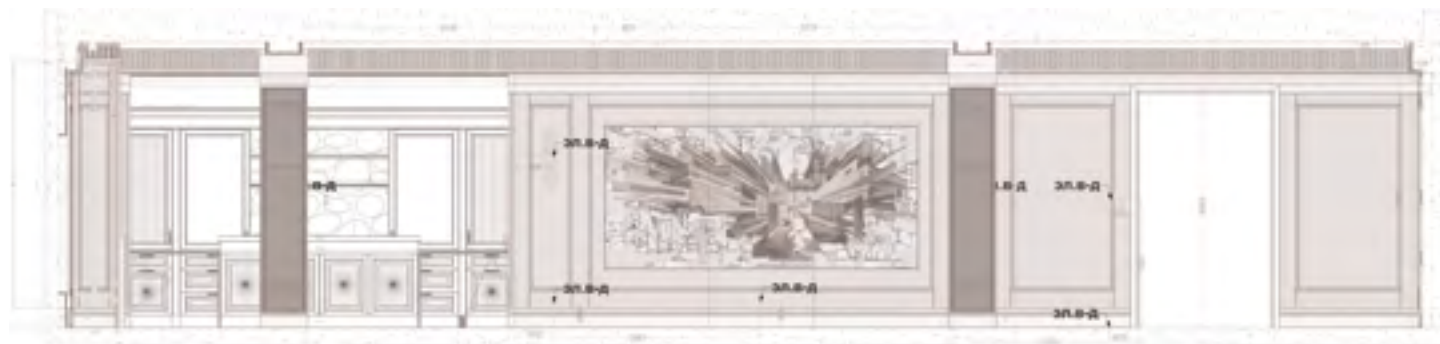


DINING ROOM

The elegance and sobriety of the colors and materials chosen denote a great depth and knowledge on the part of the entire team involved. The design has enhanced every single detail of this splendid Penthouse and the production by FMF has been able to emphasize the potential of the materials with a result of particular value.

PROJECT

A selection of 400 square meters, out of a total amount of 1800, of exclusive essence of arctic plane tree. A careful lacquering with special paints designed and tested to keep the color of the plane tree intact and enhance its texture.



Production detail of the pillars in national walnut with metal inserts that harmonize well with the colors and materials of floors and furnishings.





An overall view that testifies to the complexity and refinement of the project, where the constructive functionality constantly dialogues with the aesthetic choices.





LIVING ROOM

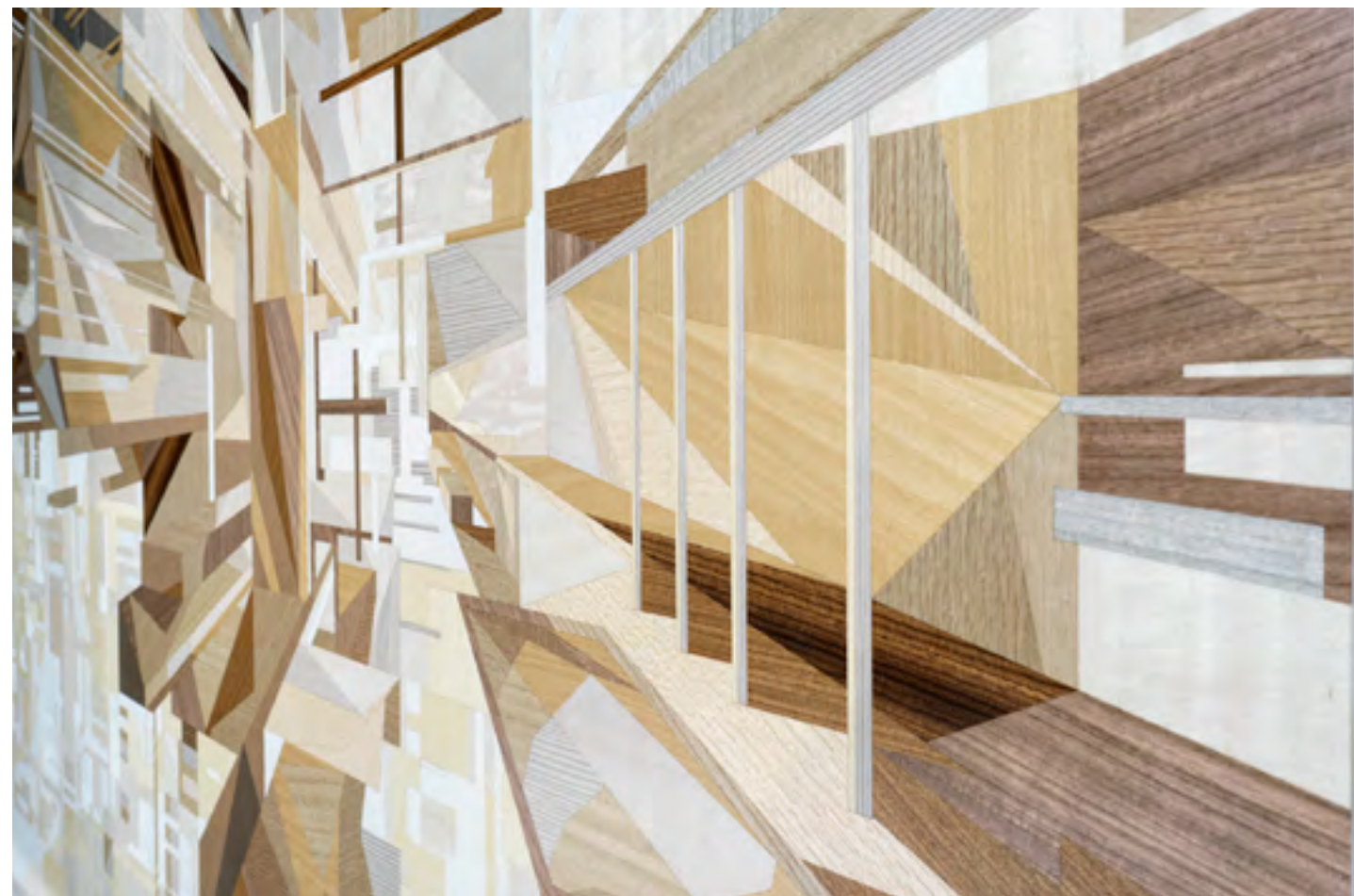
The continuity of the dialogue between the spaces is underlined by the frieze and the design of the false ceiling.

A single personalized decorative element stands out over the entire living room and is made exclusively on the customer's project. The inlaid panel measures 370x170 cm and represents a perspective view of the city of Moscow.

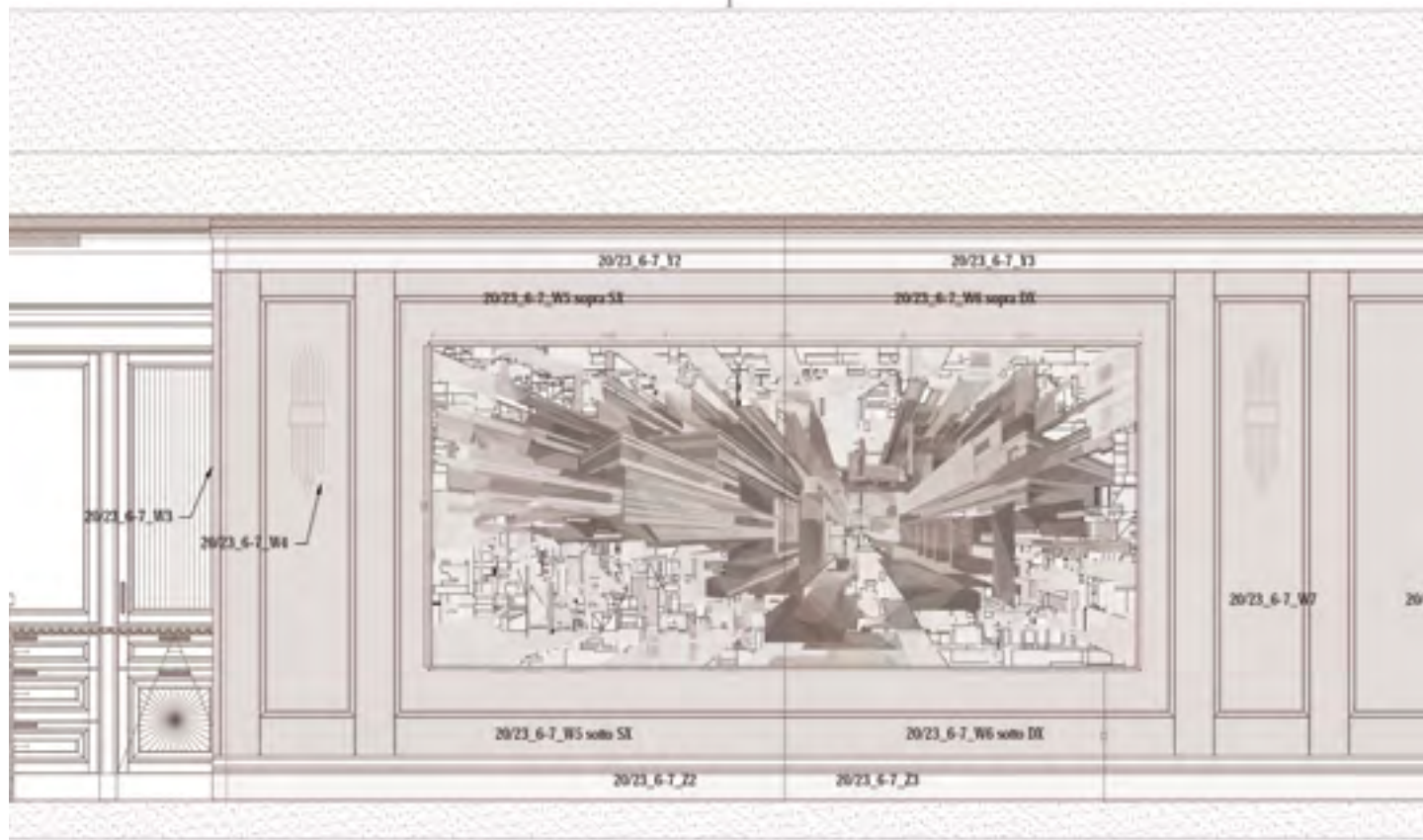


INLAY ART

Development and realization of the living room boiserie. The internal structure has been designed to withstand the weight and hanging of the inlaid work of art.



A MOSAIC OF 7560 TILES

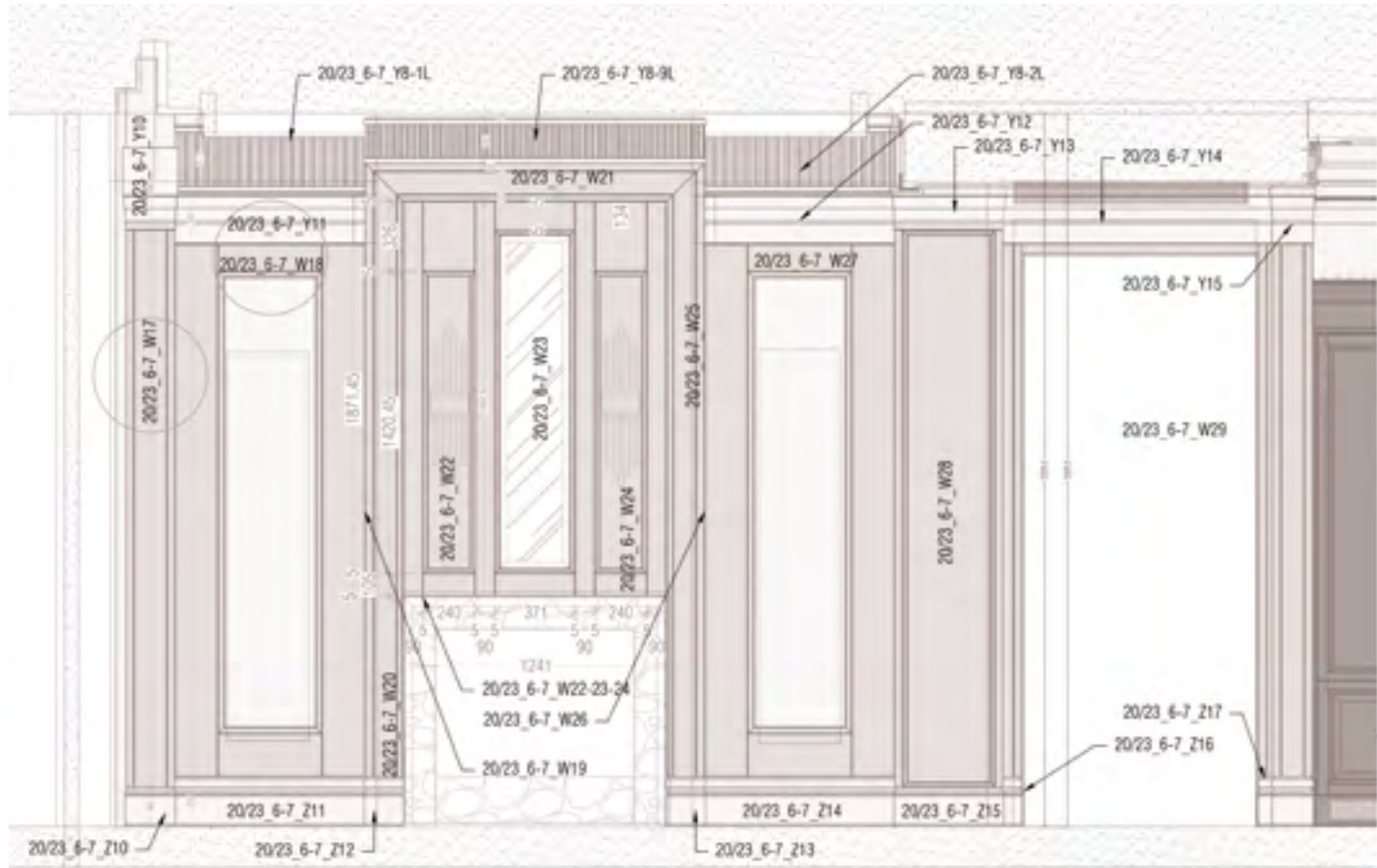


The panel represents a perspective view of the city of Moscow from above. The perspective lines converge on a single focal point and determine a mosaic of about 7,500 tiles, each of a different shape. 80 wood essences with particular color characteristics were used to create the chiaroscuro and give the desired depth to the work.



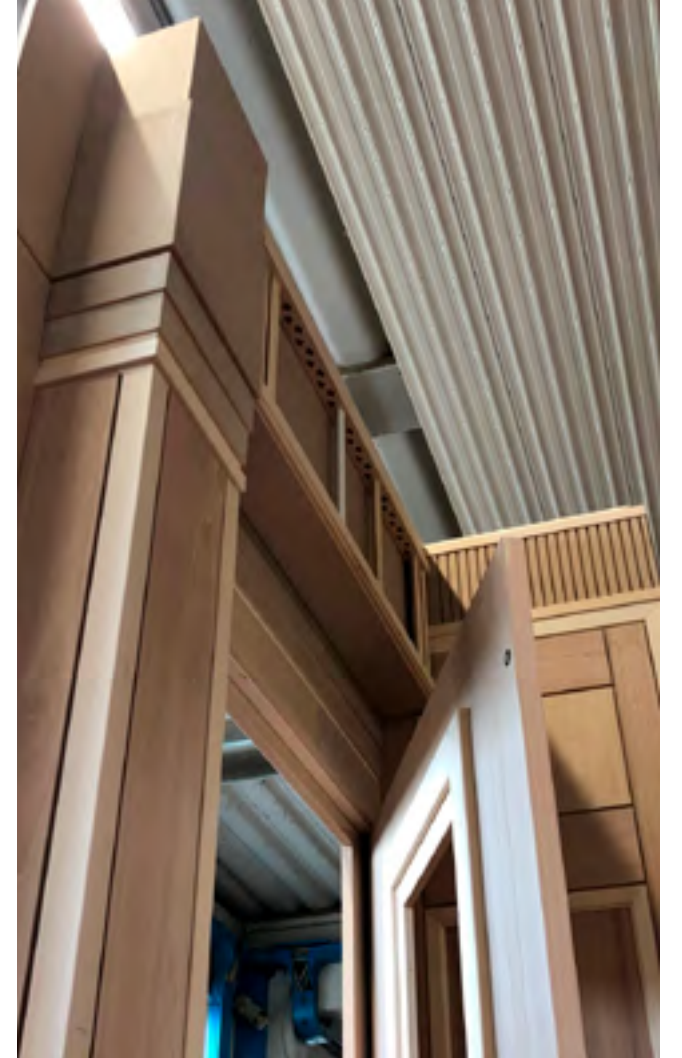
Detail of the initial render and of the graphic legend with the indications of the essences for the realization of the panel. Great attention was paid by the inlay masters for the coloristic combination of the woods used.





FIRE PLACE

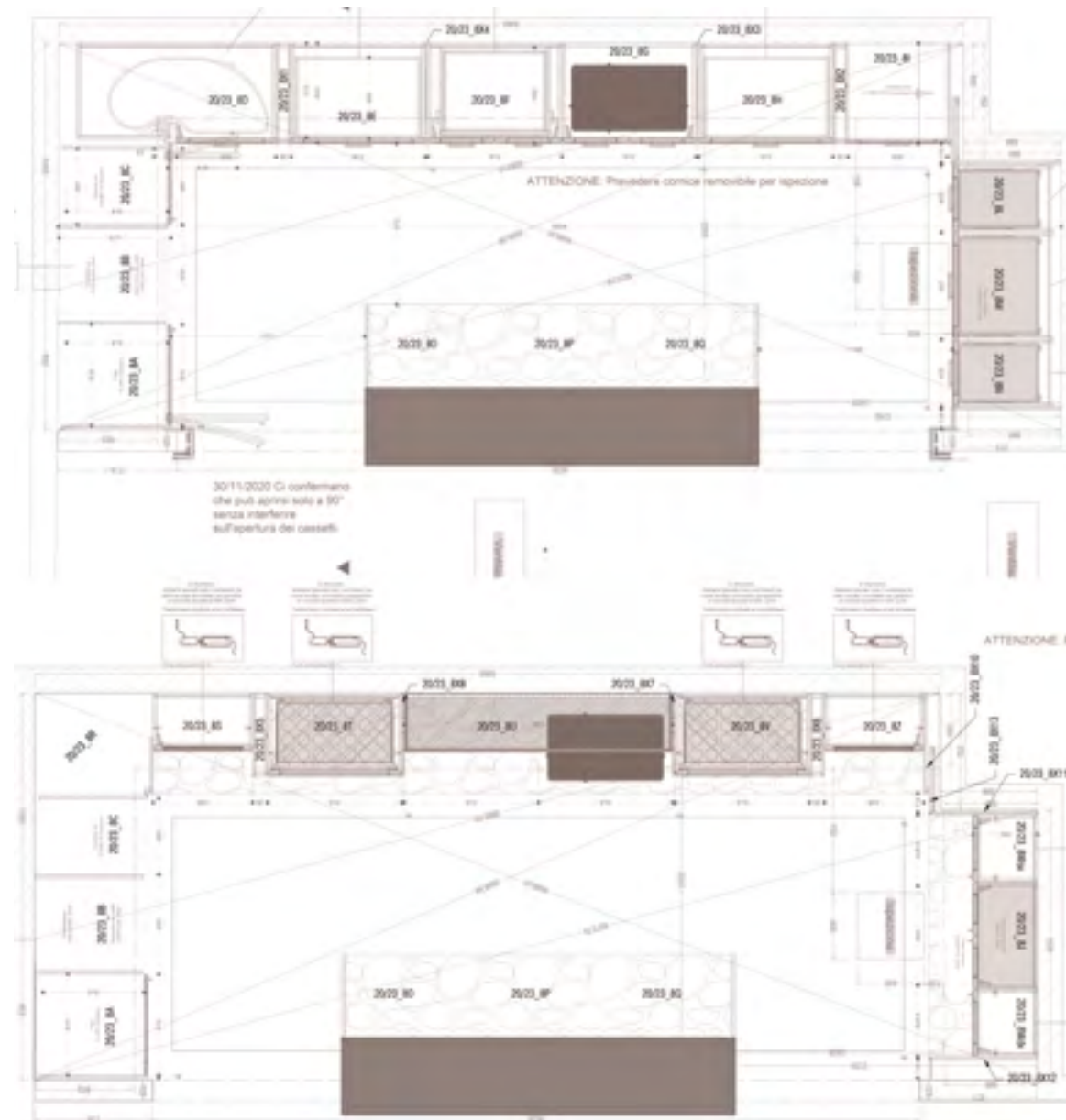
The corner of the fireplace that connects the living room with the kitchen has been designed using the spaces created for technical and home automation compartments.



KITCHEN

The kitchen was made of two-tone national walnut as a noble essence to be combined with the arctic plane tree, which harmonizes well with the pillars, also in walnut, and with graphic profiles in brushed and oven-repainted brass.





Inlaid panels have also been inserted in the main doors of the kitchen as a central decoration that balance well with the glass doors and the boiserie.



DETAILS

The pre-assembly in the laboratory highlights all the details of the walnut kitchen product.

Particular attention was given to the internal equipment such as the shaped glass holders covered in nubuck.





MASTER BEDROOM

The master suite, with 340 cm high ceilings, was made of arctic plane tree. The silk brocade fabric with which the boiserie was covered is expertly illuminated by the sequence of crystals that reflect light throughout the room.

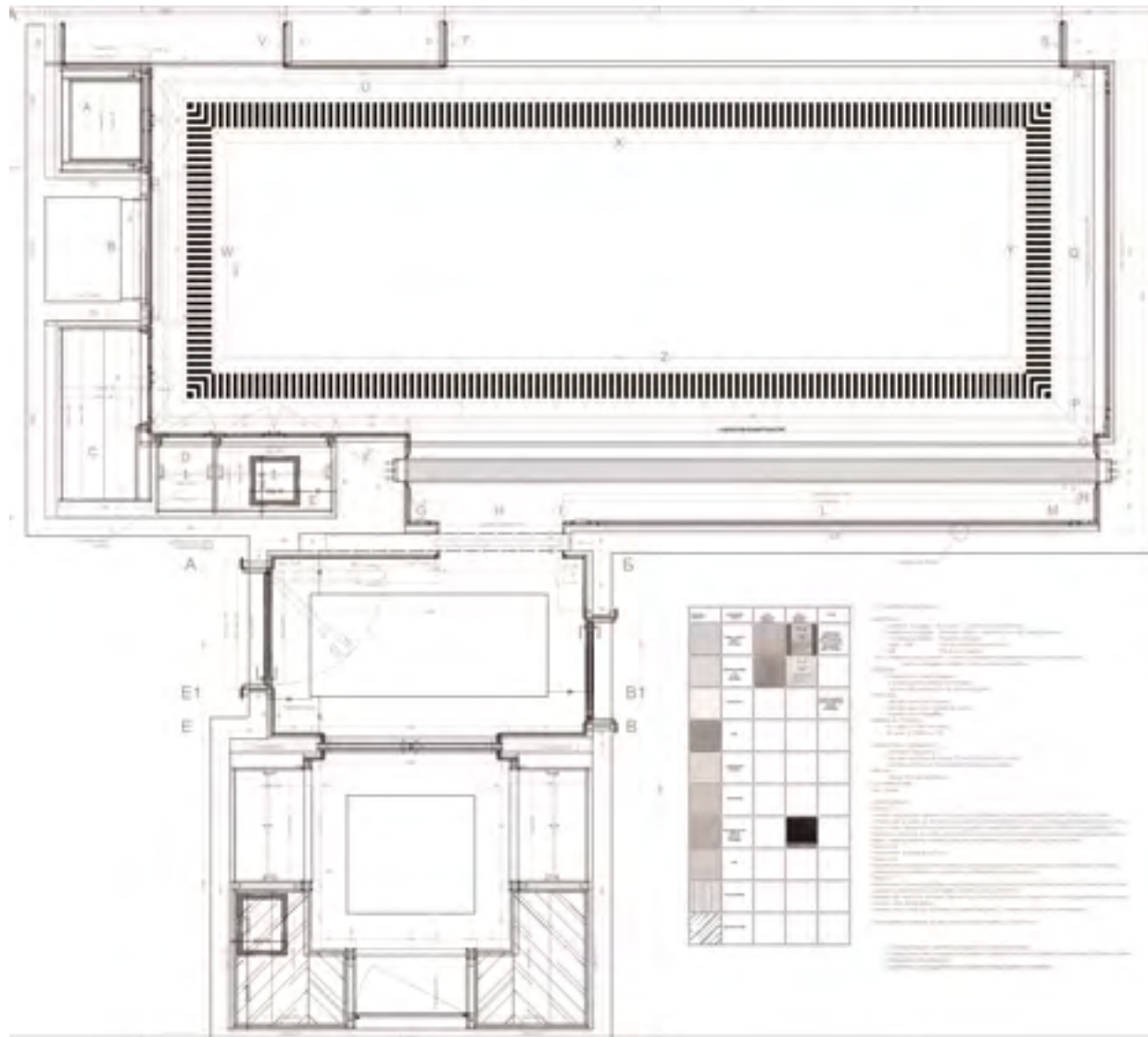




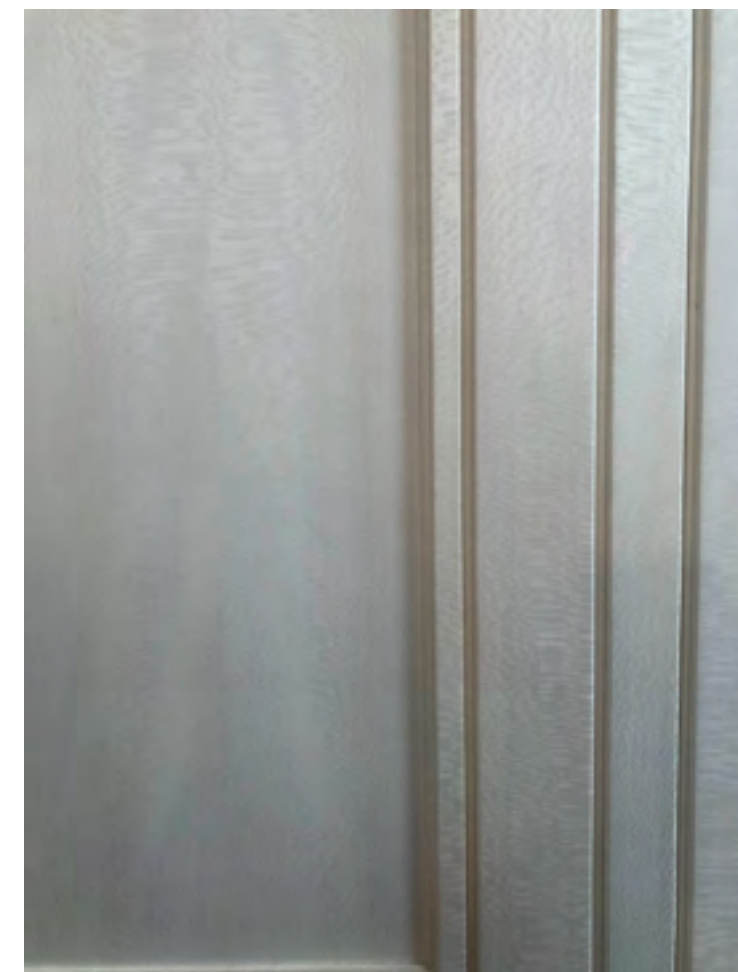
Details of the furniture on an exclusive design and of the silk brocade fabric panel.



ACCURATE DESIGN



Constructive detail of the installation of the false ceiling which contains the technical compartments for air conditioning. The strips of the frieze have been designed with a triangular section to facilitate ventilation functions.



56



57

DETAILS

Details of the assembly on site: brushed and oven-painted brass, the arctic plane tree arranged in a radial pattern and the precious glass for the diffusion of LED light.

58 MASTER BEDROOM

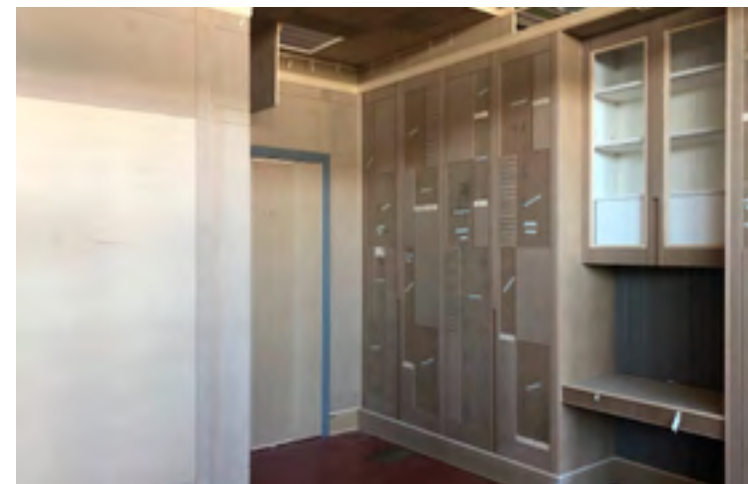
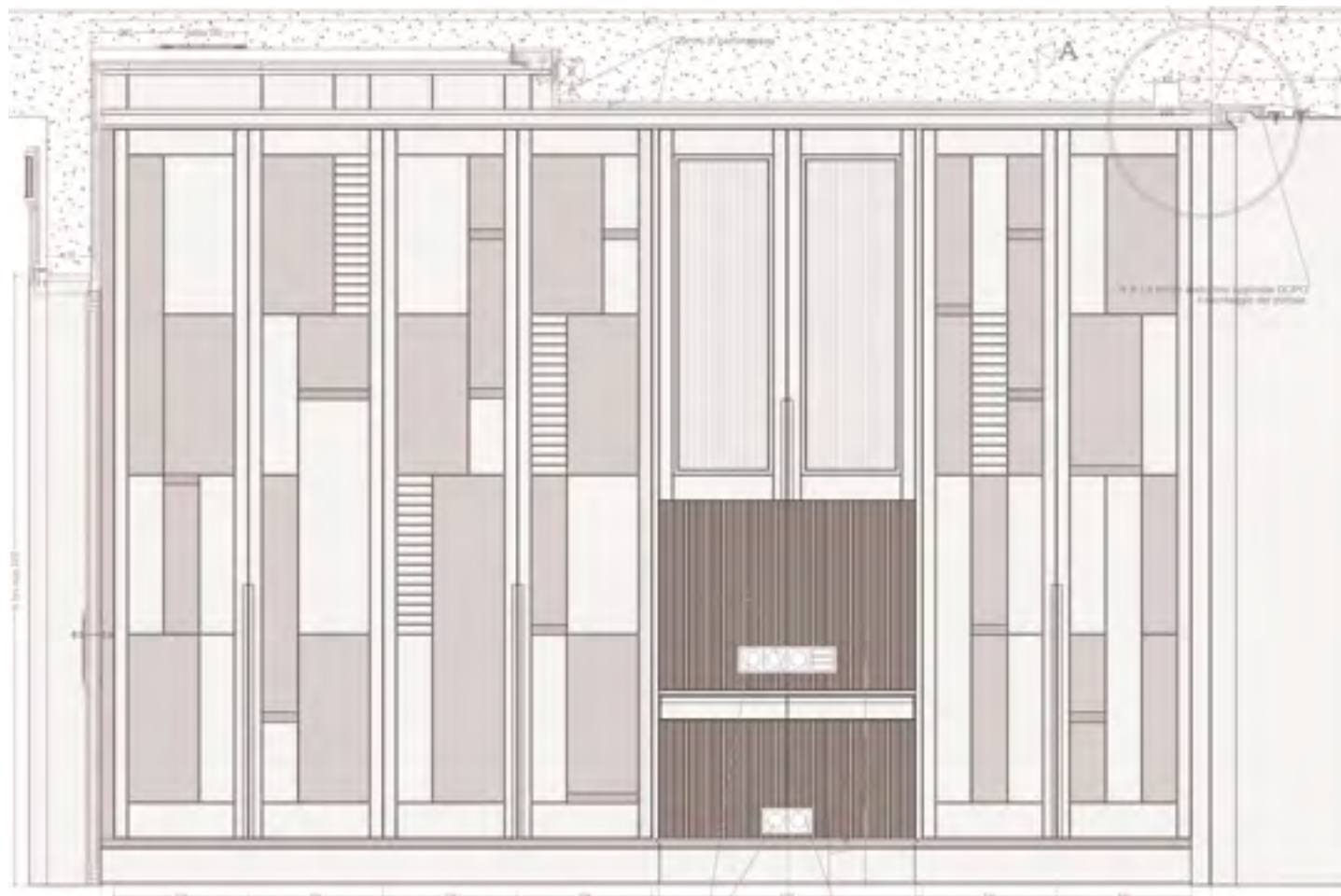




INTIMATE COMFORT

Overall view of the master bedroom with fireplace area fully equipped with Arctic plane wood paneling and lacquered wardrobes.

SON BEDROOM



Details and pre-assembly of the son's room made of plane tree and brushed brass. Particular attention has been paid to the design which creates a particular graphic effect thanks to the texture of the essences and the lacquering.





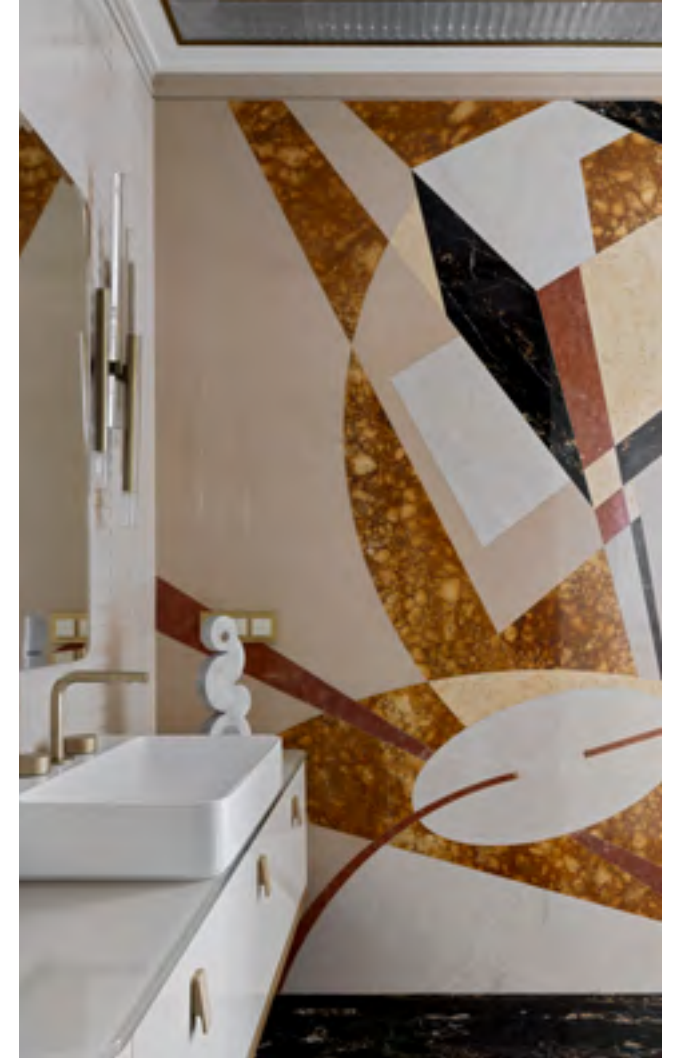
DETAILS



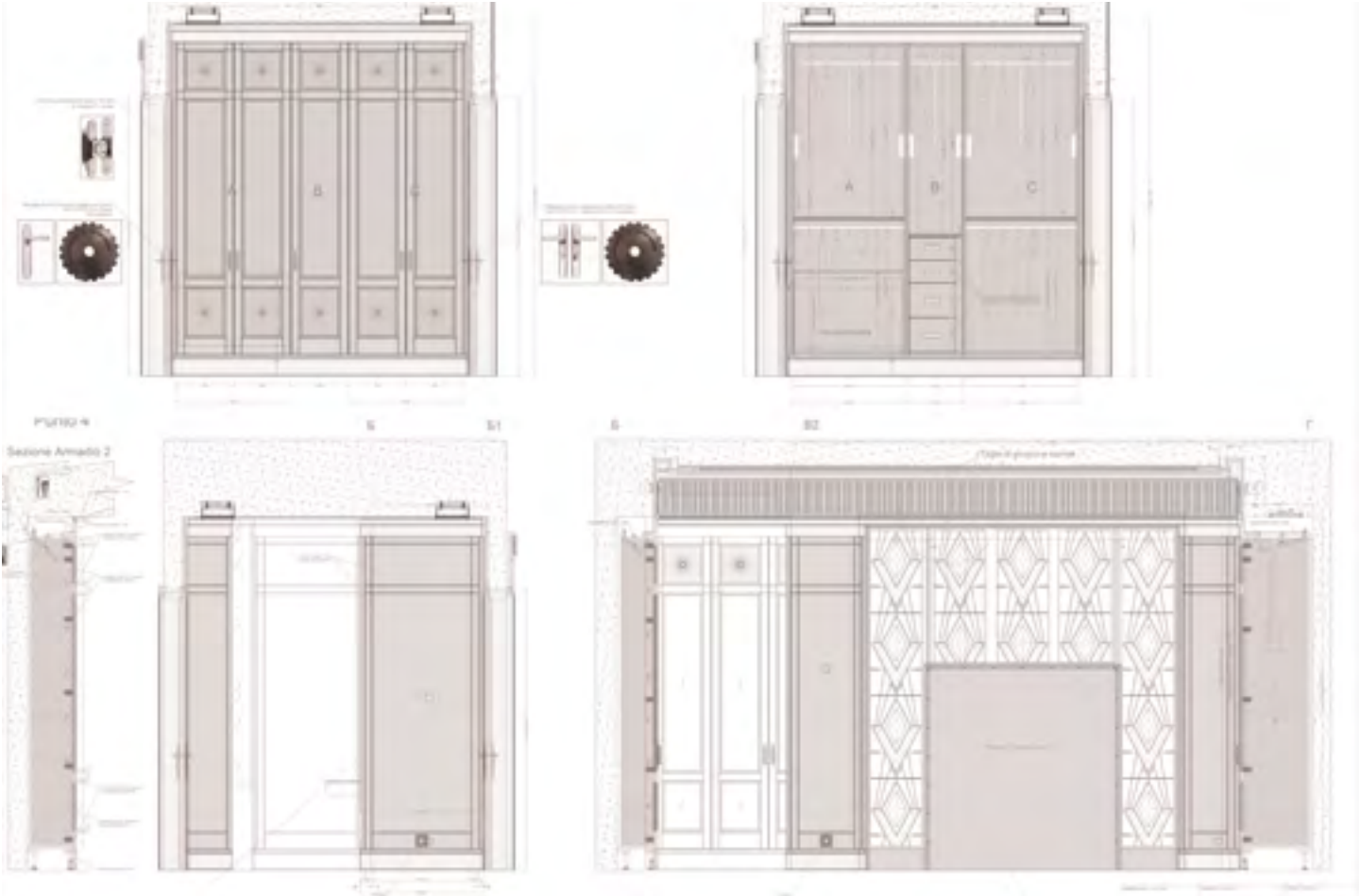
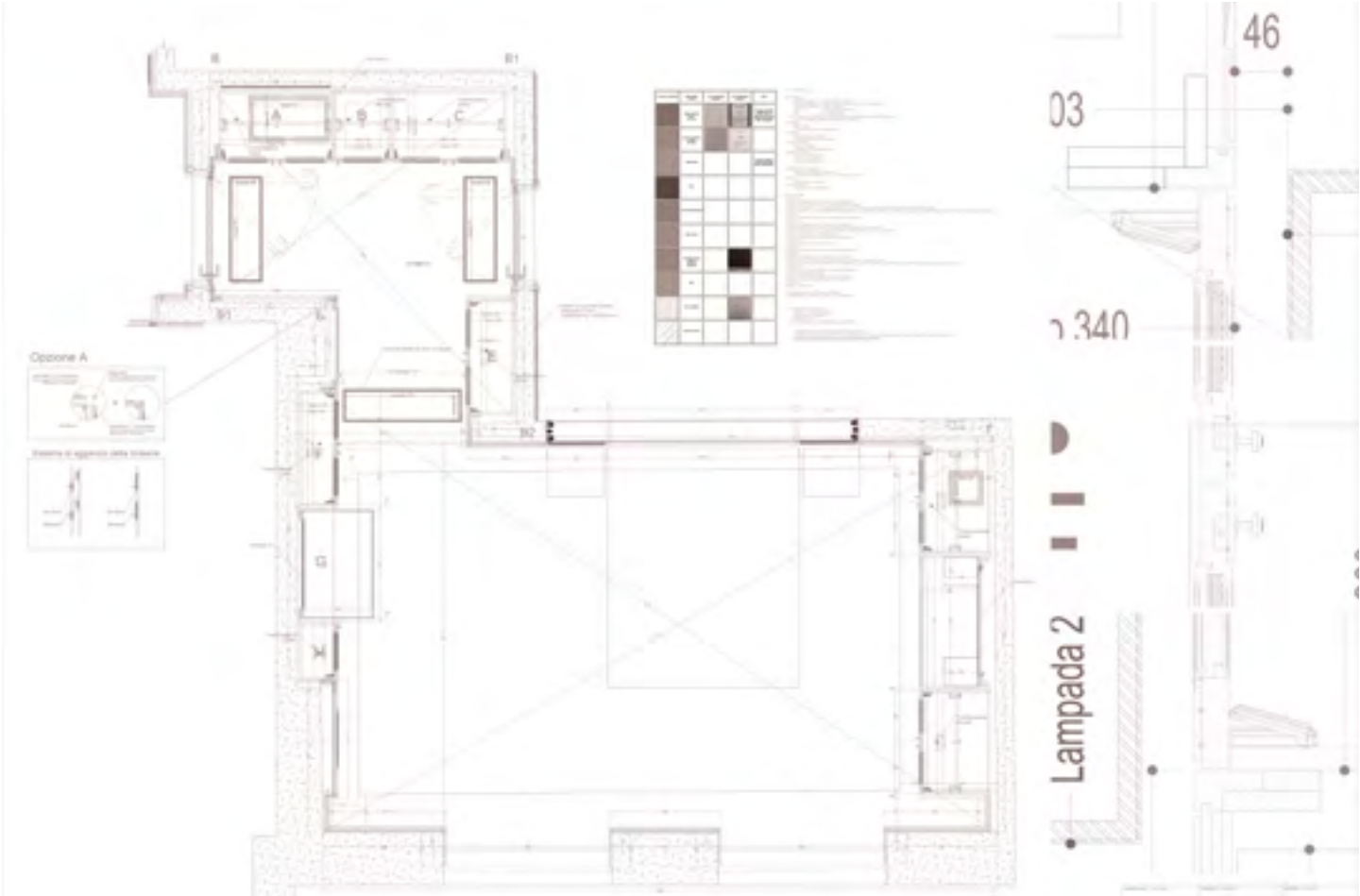
GRAPHISM AND DESIGN

Details of the geometric pattern designed for a masculine environment. The modern cut of the boiserie wall and the cabin is characterized by the alternation of skilfully combined materials.



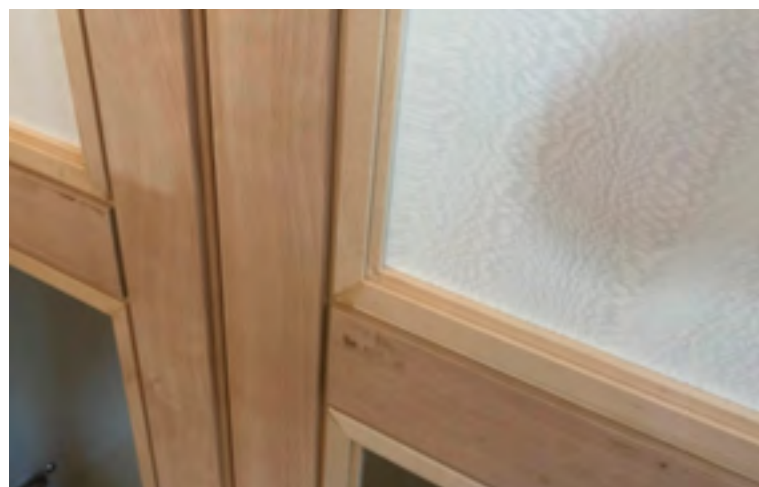


DAUGHTER BEDROOM



PROJECT

WALK-IN CLOSET



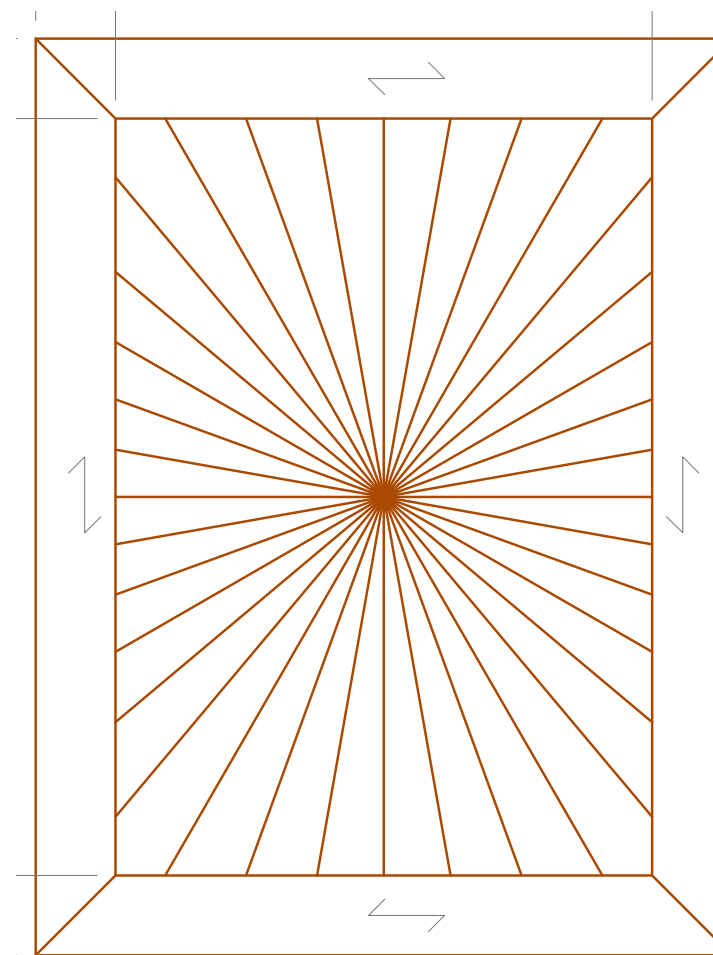
Details of the realization of the walk-in closet in the FMF laboratory. The internal layout has been designed for functional use without ever neglecting the aesthetic aspect.

PRECIOUS ARTIC PLANE TREE



Arctic plane tree is a precious essence, used throughout the Penthouse project, to which a painting technology has been applied that allows to maintain the pearly color while preventing the change of the original color.





The plane tree panels have been designed with a radial arrangement made up of 36 segments. The plane tree has been processed in a sterile environment to avoid any imperfections in the brushing phases with paints against ultraviolet rays.





BATHROOM

The bathroom is characterized by the steel and glass wall that communicates with the room, creating a suggestive decorative effect and allowing the light to filter indirectly.

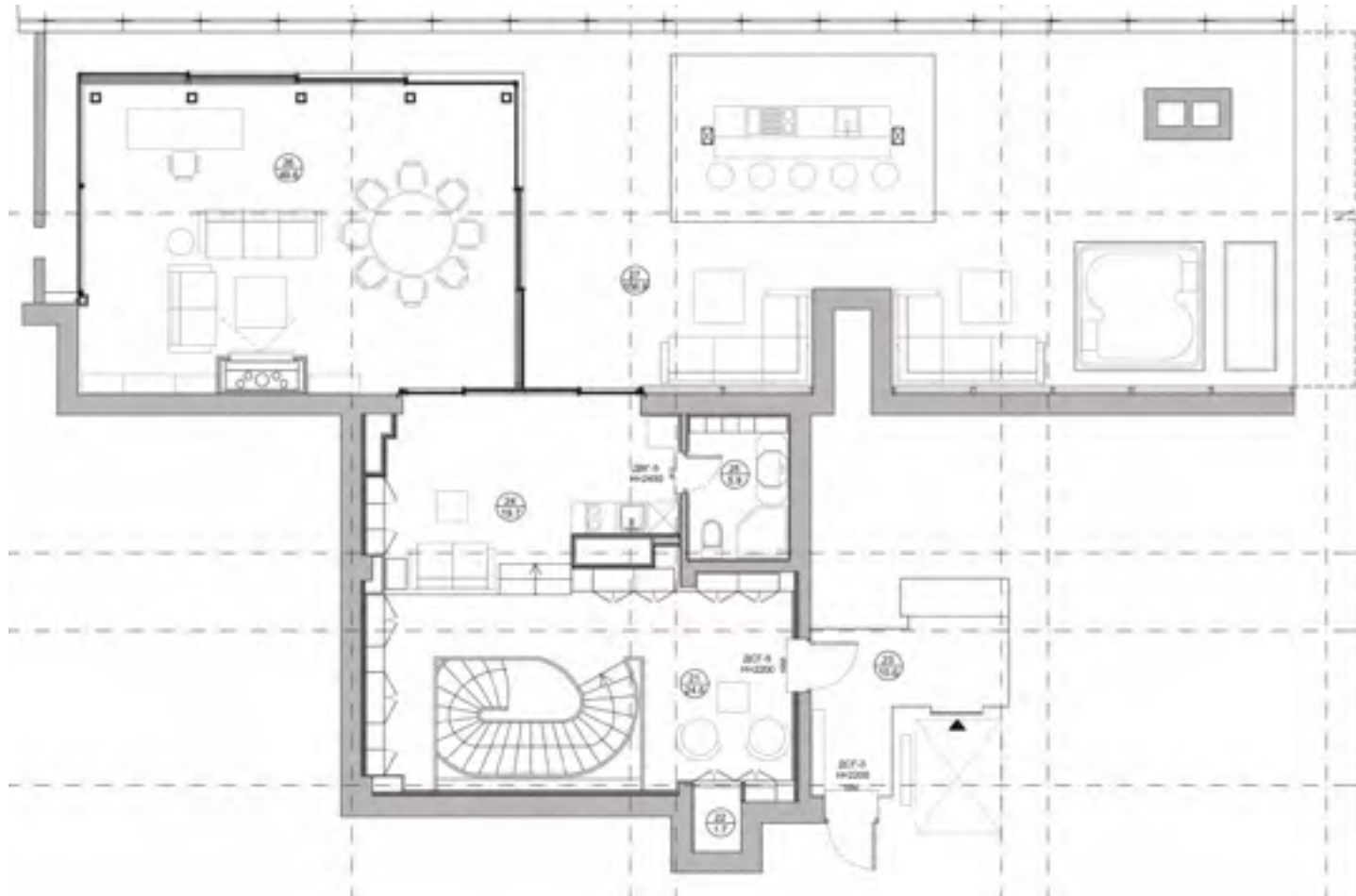


The elegance of the bathroom is given by the contrasts of the materials, the Nero Portoro marble floor, the lacquering of the furniture, the chromed steel and the glass, with ribbed processing for the luminous profiles.

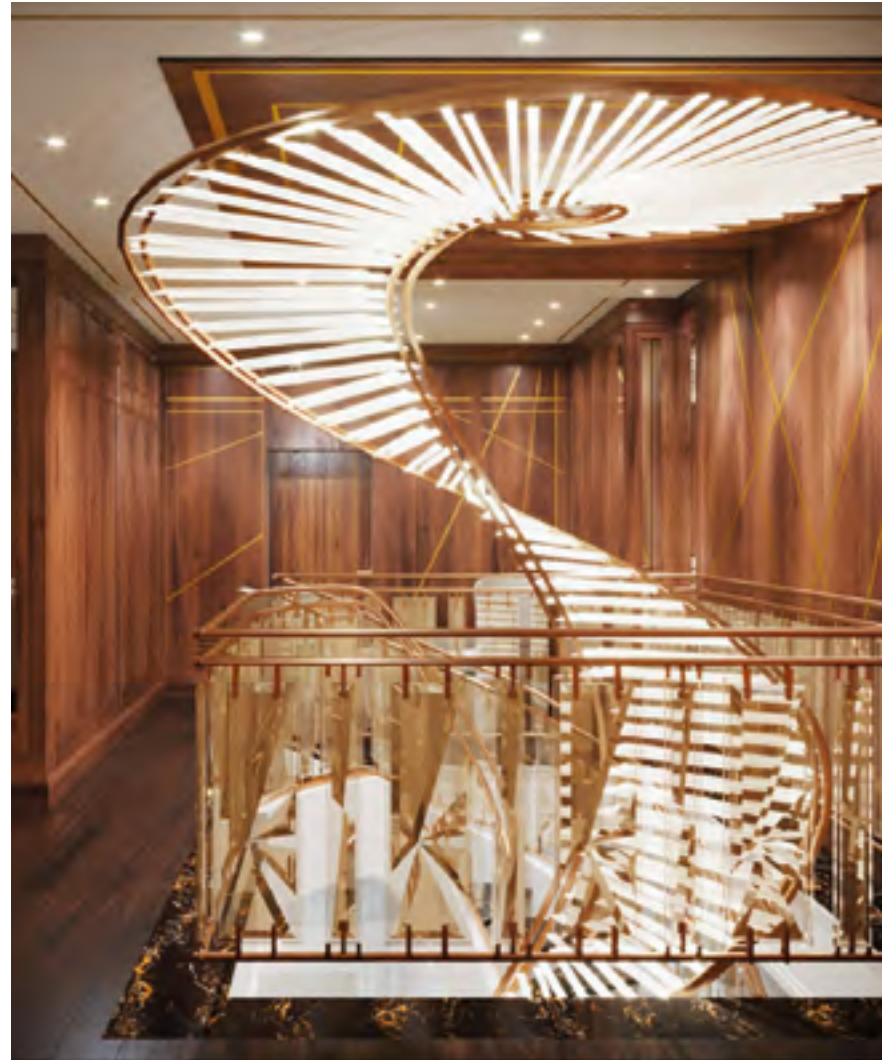


TOP FLOOR

Exclusive design for the top floor of the apartment where functional, formal and private spaces are enclosed, a single large view of the city through a path of great design quality.



RENDER



The renderings made for the client and arrived at FMF represent the reality of the final project that was followed up with monthly checks both with the design staff and with all the workers involved.





The staircase and the chandelier lead to the top floor, marking the transition from the brightness of the arctic plane tree for private environments to the warmth of Italian walnut for a space with elegant and formal tones.



Details of the work on site and the arrangements for each partition: from the pre-assembly of the staircase to the ceiling supports of the chandelier.

94



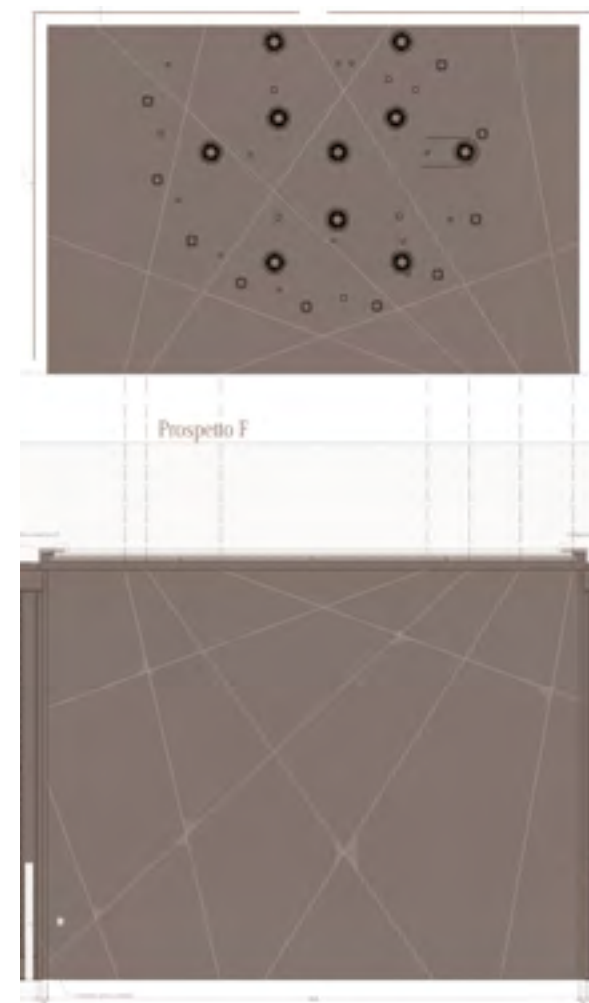
WOOD CEILING

The false ceiling of the stairwell has been designed in a series of interlocking panels on a steel blade with all the technical arrangements for lighting. A spectacular structure supports the interlocking panels.

95

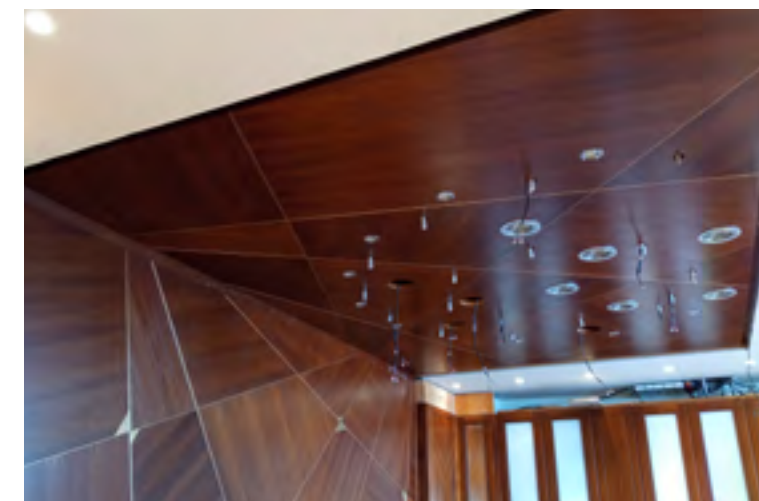


96



DETAILS

Details of the project, construction and assembly on site.



97



WALNUT BOISERIE



The assembly phases in the FMF laboratory of the paneling of the stairwell. The graphic model is determined by the alternation of the walnut and the insertion of the brass flush.

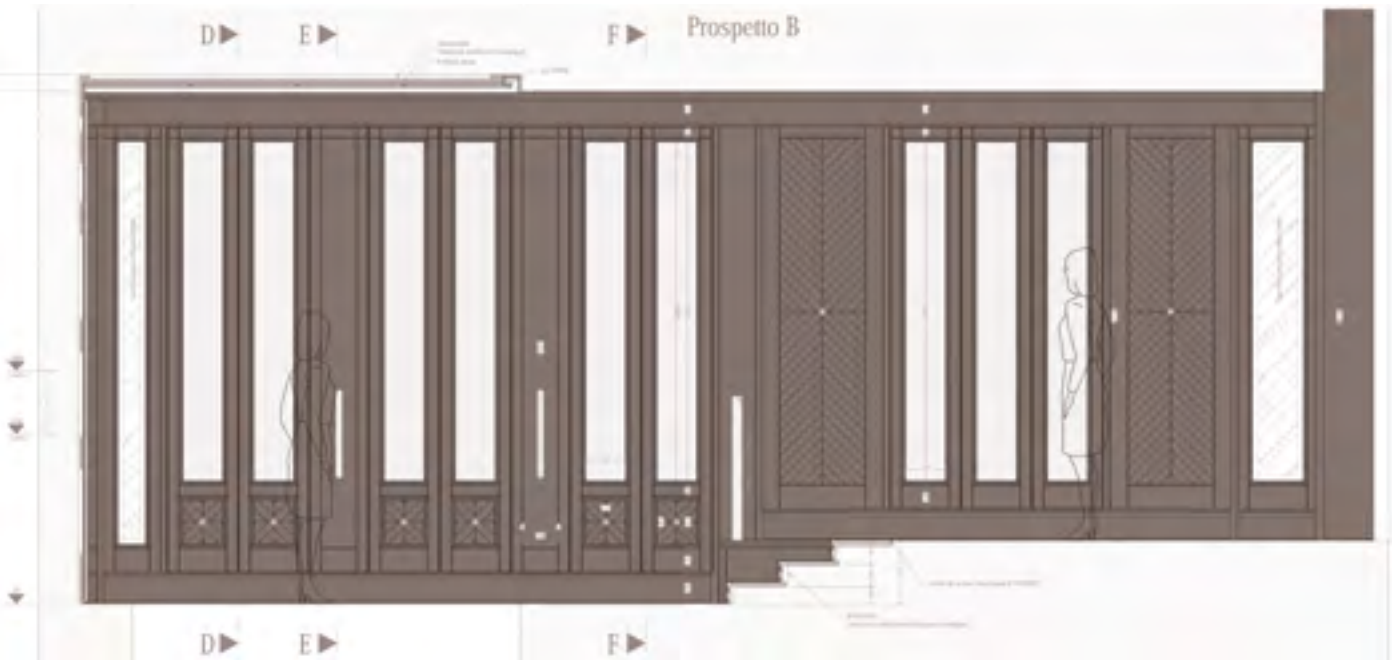
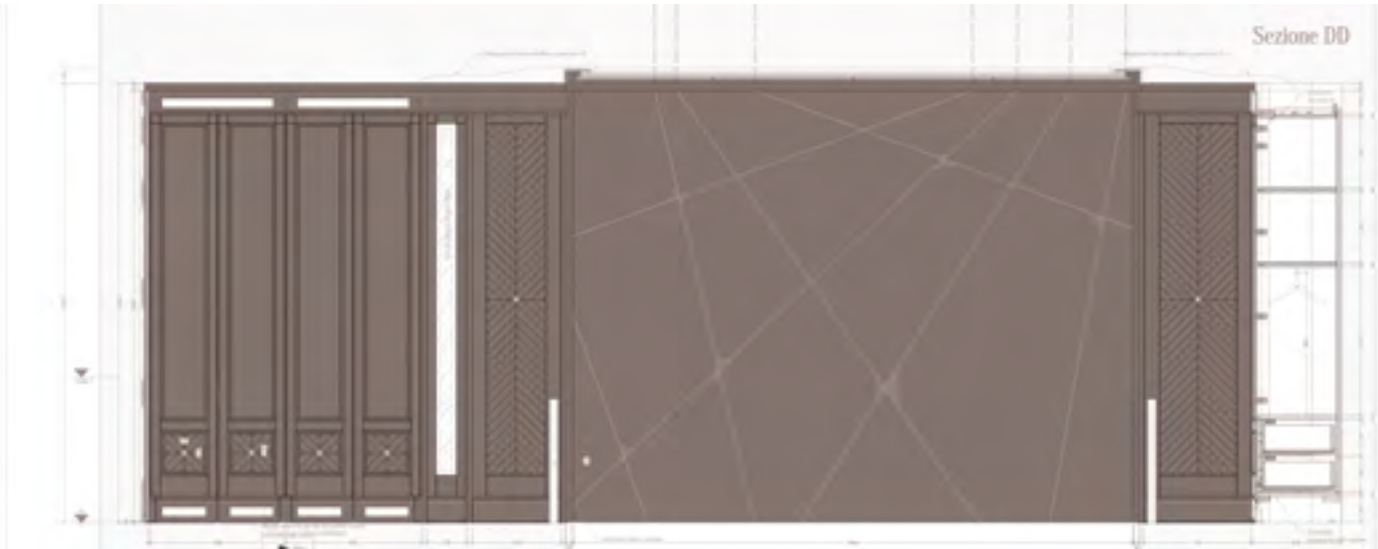


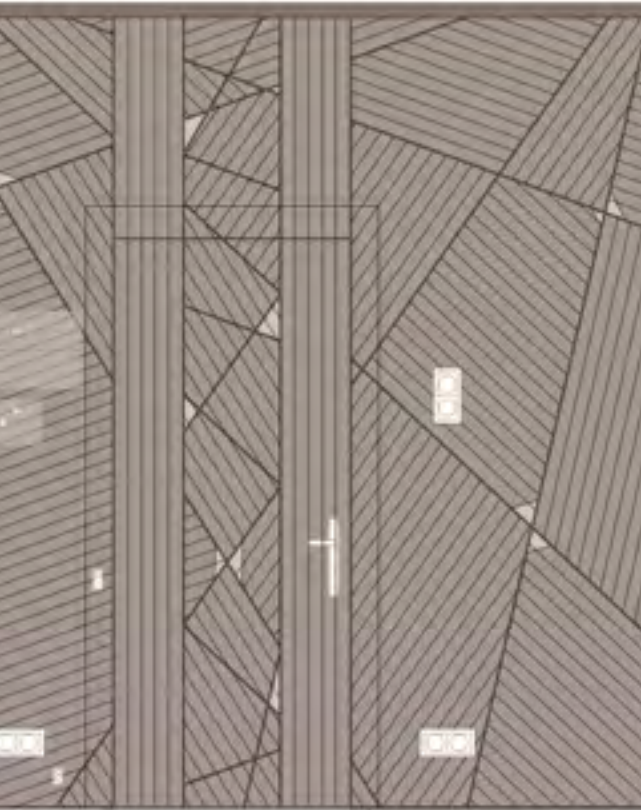
Evocative view of the control and verification of the production of the boiserie by FMF. 1300 square meters of two-tone national walnut selected personally by Franco Martinello.



1300 SQUARE METERS OF WALNUT









Details of functional spaces with a service kitchen perfectly integrated into the style and decoration of the design context.



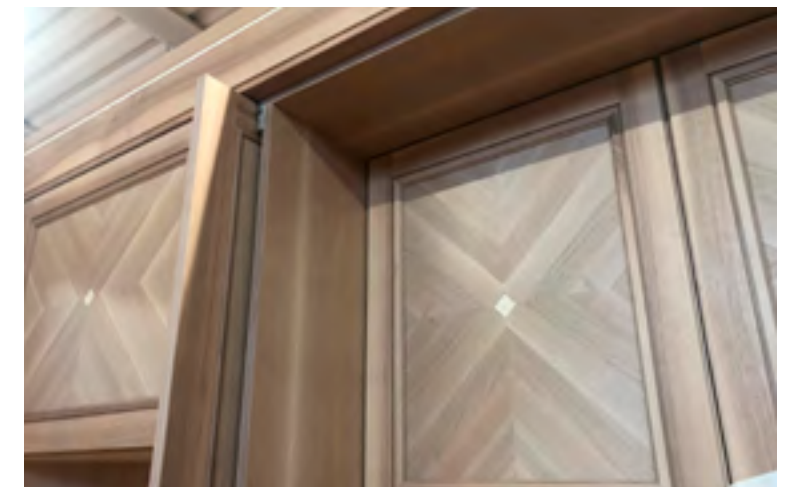
110



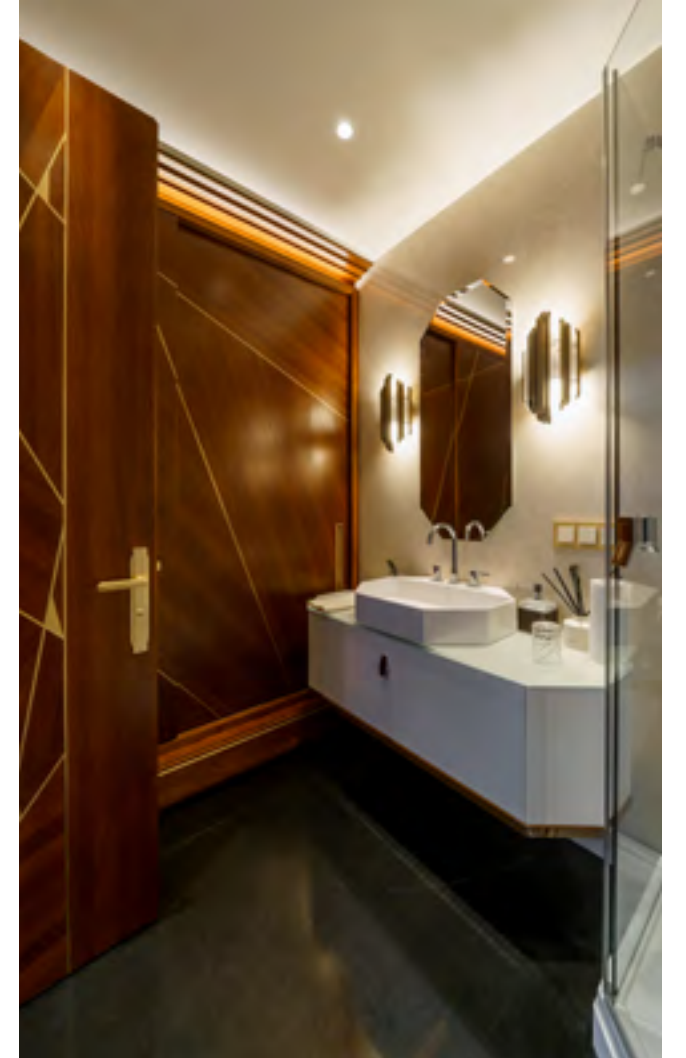
The construction of small and functional spaces allows you to evaluate the effort design and manufacturing to create and coordinate the main construction details of each single element.



DETAILS



111





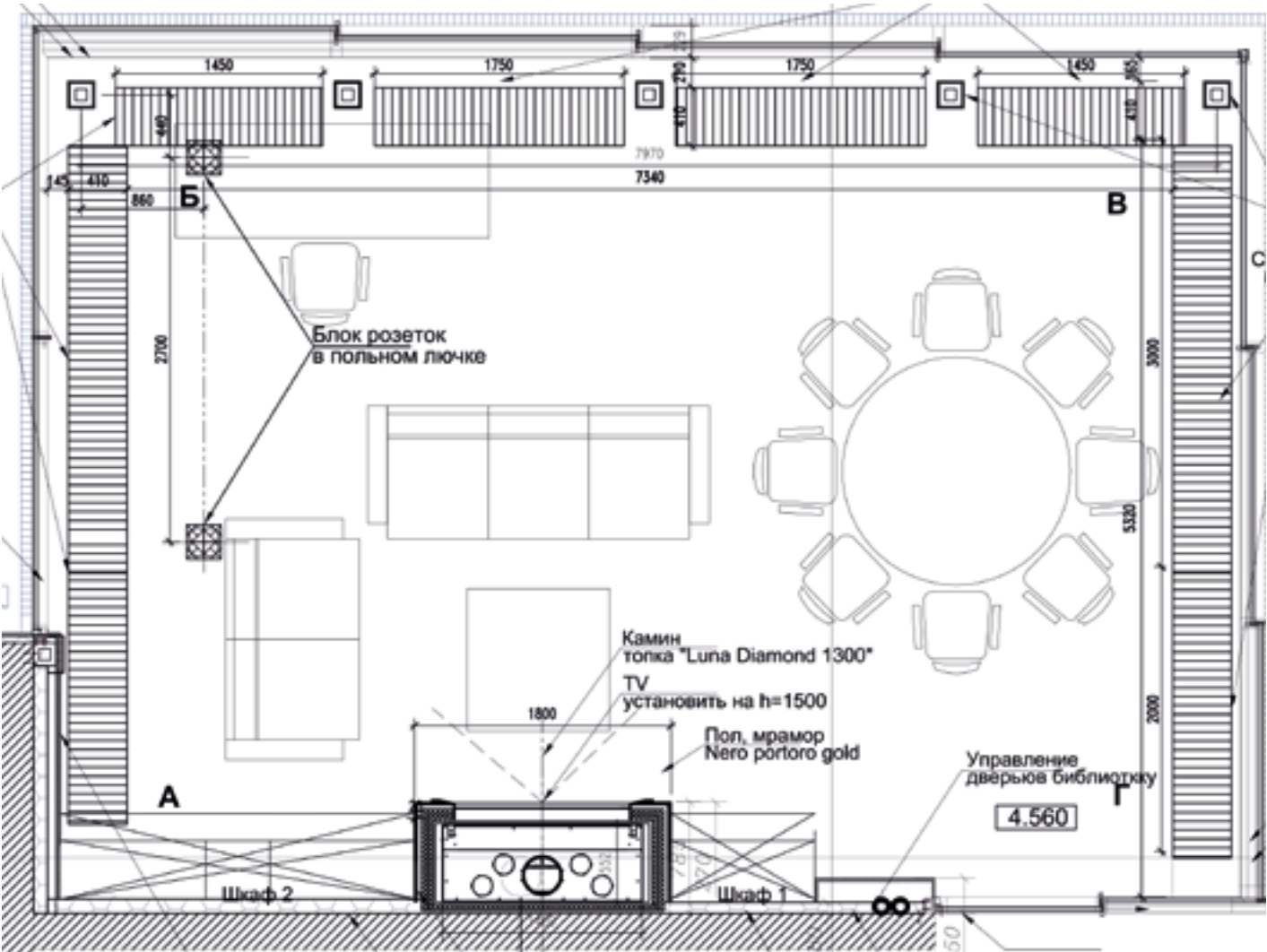
Overall view of the project in its elegance and sobriety; the semi-gloss transparent varnish has enhanced the walnut vein, creating an evocative play of reflections and textures.

TOP VIEW

Suggestive view from the Main Room on the Sky line of the City. One place reserved but at the same time formal that expresses versatility spaces and care for materials.

Exclusive environments able to offer a refined comfort without neglecting beauty and elegance.





PROJECT



120



Details of the natural natural walnut, worked in a herringbone pattern that recalls the sunburst theme in the lower doors.

121



DETAILS

122



Functionality and capacity of the furnishings that have been made with obsessive care.



DETAILS



123









LUXURY COMFORT

The exteriors have been equipped for moments of relaxation: a large solarium with teak flooring and a kitchen complete with a fully steel barbecue.







CREDITS

Studio di progettazione
di Arch. Pomelov Alexey

Arch.generale di progetto:Arch. Pomelov Alexey
Arch. Pomelova Svetlana
Arch. Konstantinova Ludmila

Project Management
e fornitura arredamento:
Flat Interiors
<https://flat-interiors.ru/>

*Rapresentanza FMF Atelir
in Federazione Russa:
New House Design*
Direttore Generale:
Krancheva Elena
www.nhdes.ru

FMF SRL

Via Don MARIO Cancian , 79
31020 San Zenone degli Ezzelini (TV) ITALY
Tel +39 0423 968130
info@fm-f.it

www.fmfatelier.com



FMF

www.fmfatelier.com

